


S | Skyline D



A man in a warehouse wearing safety glasses and gloves, working with cardboard boxes on a pallet. The background shows a large industrial space with white walls and a door.

Skyline Design's commitment to sustainability begins—and continues—in Chicago, Illinois, where the company occupies a 150,000 square foot building originally constructed in the 1920s.

S | Skyline Design
D



Markets

- Healthcare
- Interiors
- Exteriors
- Glassboards
- Decorative Film
- Public Art



Skyline Design Architectural Glass VS. Decorative Resin

- Skyline Design fabricates exactly to the size specified up to 72” x 144” – No waste, lower costs to the end user
 - *Decorative Resins limited to 4x8 and 5x10 sheet goods – end user pays for the entire sheet good including waste + the labor to fabricate*
- Glass is structural and can support itself, no special hardware is required which saves cost and labor
 - *Decorative resins required special structural support due to the inherent lack of structural rigidity adding to product and installation costs*
- Glass is a far more durable surface material for high traffic public areas, it can withstand constant abuse and everyday cleaning. Nonporous, virus and bacteria resistant and easily maintained with standard commercial and healthcare cleaning agents including bleach
 - *Decorative resins easily scuff from carts, beds and other various healthcare equipment. Special cleaning protocols need to be maintained to ensure proper cleaning agents are used to minimize damage*
- Skyline Design offers a warranty of 5 years for laminated products, 10 years for Vitracolor Back-painted and Frit Printed products
 - *Decorative resins offer a 2-year limited warranty*



EcoEtch

Skyline Design's proprietary etching process is created with recycled aluminum oxide for a fine, consistent finish. A single-sided Eco-etch technique creates a translucent etched pattern on a clear field.







Digital Printing

Skyline Design's proprietary digital printing technology uses UV or ceramic frit inks to print high-resolution images, patterns, and gradients onto glass. Limitless options are available to customize the privacy level for any interior or exterior application.



SUSAN ROTHENBERG
DAVID HOCKNEY
BILL OWENS
LE GUN 1,2,3

Custom Printed - Back Surface of Glass



Custom Image - Printed on the Back Surface of Glass



Vitracolor Back-Painted Glass

Skyline Design's proprietary Vitracolor back-painting process applies water-based, low-VOC paint uniformly. An unlimited color palette creates opaque and writable glass surfaces. Perfect for a dry erase board or wall-cladding.





LESS TALK.
MORE
DO.

JCDecaux

TSA Pre-
Checkpoint

To All Gates

Custom Silver Metallic Vitracolor with EcoEtch Pattern on Front Surface

The image shows a modern office interior with glass walls. The left side is tinted yellow, the middle section is red, and the right side is orange. Inside the glass-walled rooms, there are conference tables and office chairs. The floor is a light, reflective surface.

Laminated

Skyline Design's laminated glass for interior and exterior use is composed of EVA interlayers fabricated in the most environmentally-friendly way possible. Best used for elevator cabs, canopies, railings, sound reduction, acoustical requirements, double-sided cleaning, and achieving a specific decorative look.

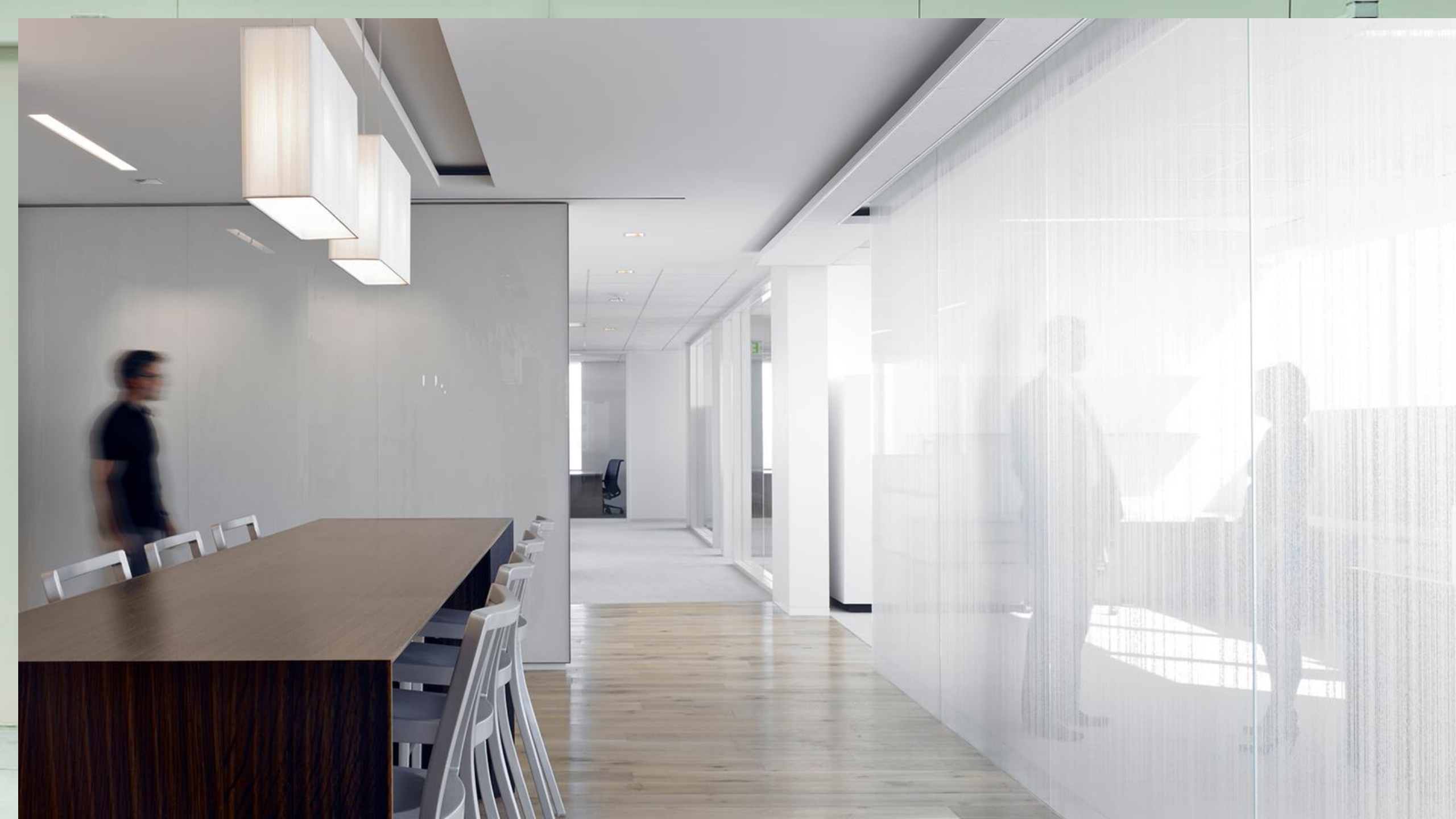


Laminated with Red Standard Transparent Interlayer



17-60

Lineal Fade / Custom – Laminated Printed Interlayer





Film

Skyline Design's decorative film for use on new and existing architectural glass surfaces. The film is made with PVC-free polyester, an environmentally-friendly alternative to PVC.





ColorGraph™
by Suzanne Tick
for Obscura™ Collection

Skyline Design

Architectural Film
Content: Polyester Film, PVC-free
Backing: Acrylic Pressure-sensitive Adhesive
Height: 8", 16", 24", 36"

888-278-4660 / sales@skydesign.com

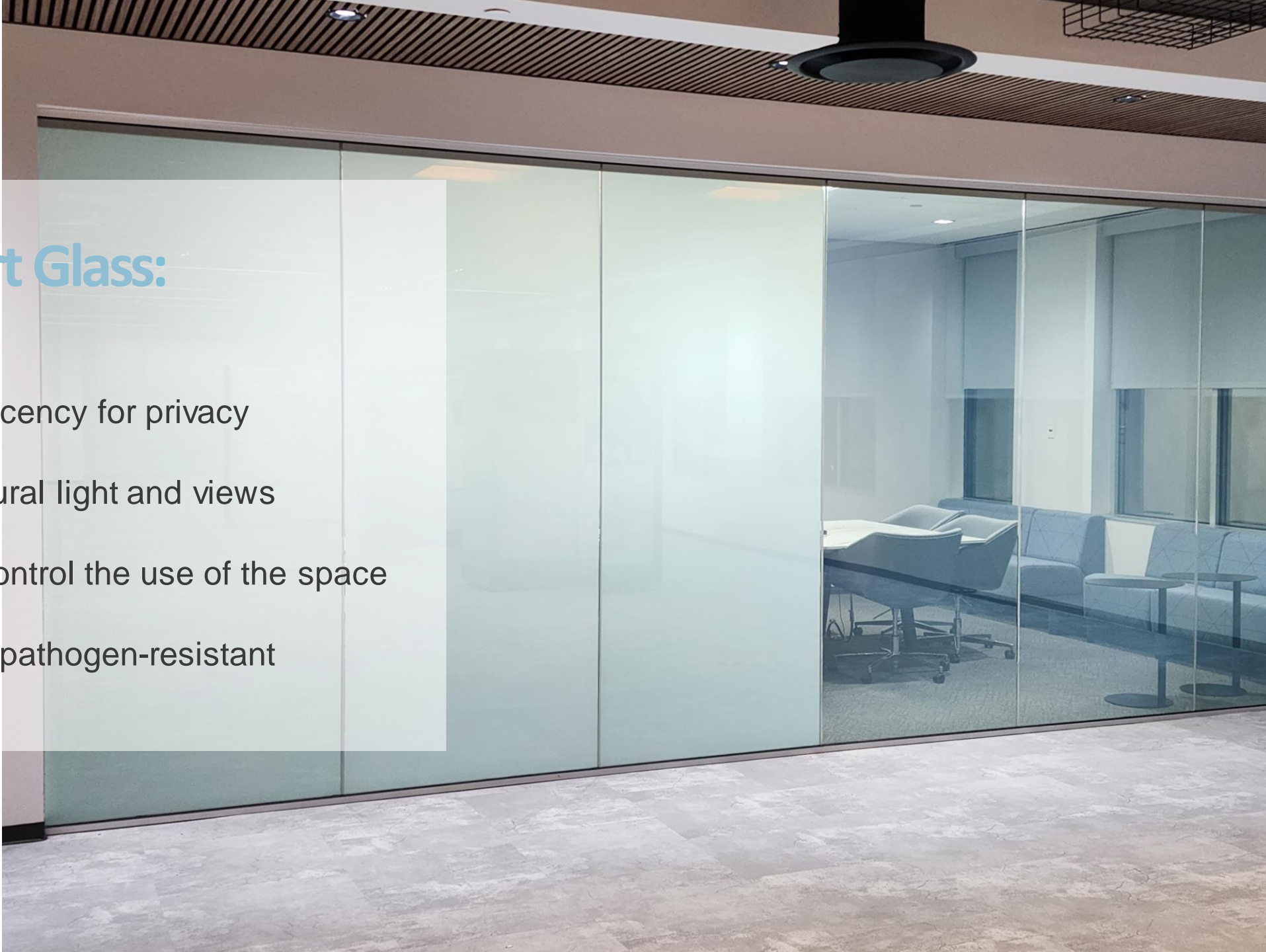
Glassboards





LCG[®] Smart Glass: Benefits

- Instant translucency for privacy
- Access to natural light and views
- Flexibility to control the use of the space
- Easy to clean pathogen-resistant



SWITCH TO PRIVATE IN 3 MILLISECONDS



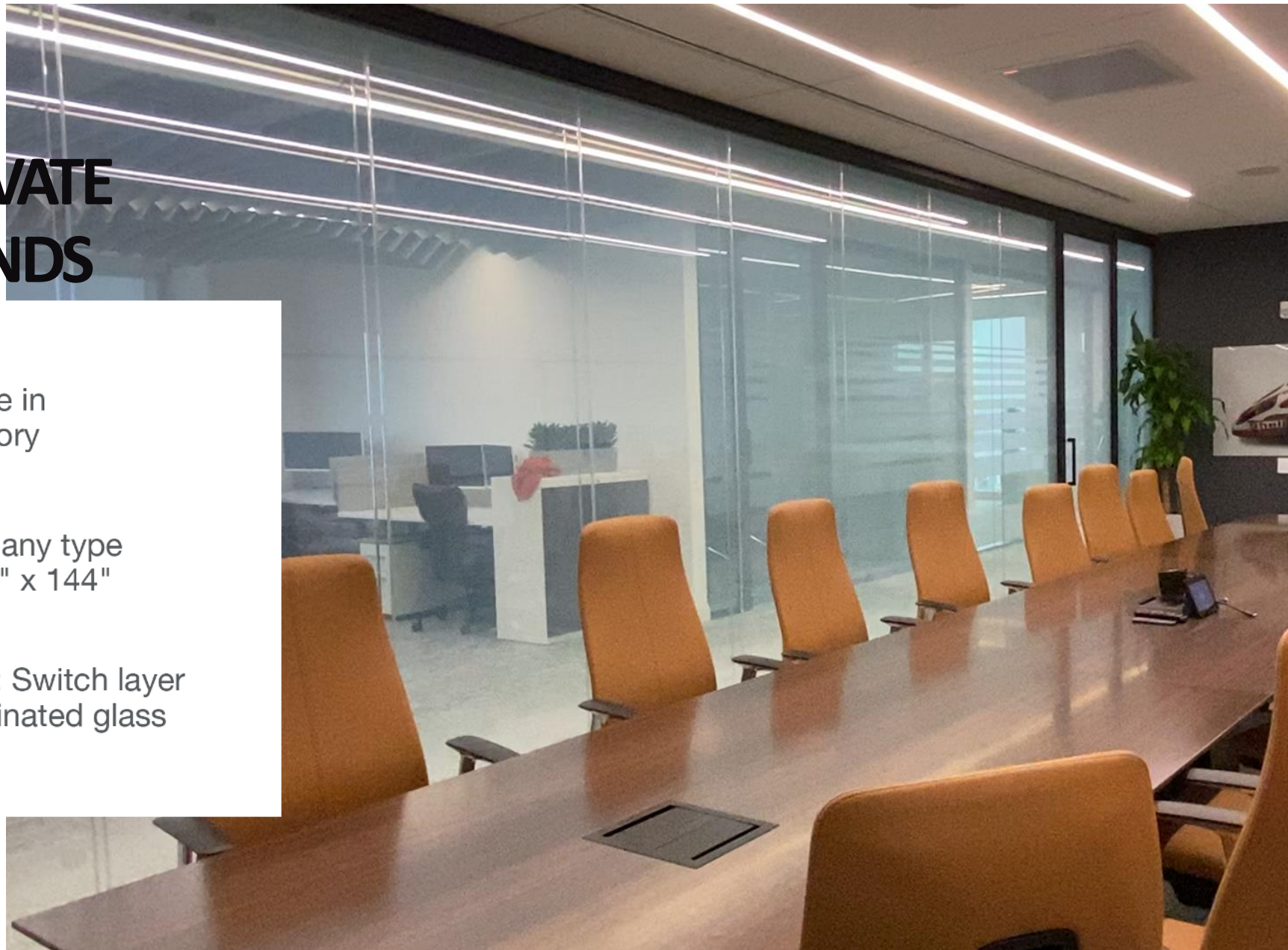
Sustainably made in
our Chicago factory



Compatible with any type
of glass up to 70" x 144"



Easily cleanable: Switch layer
is inside the laminated glass

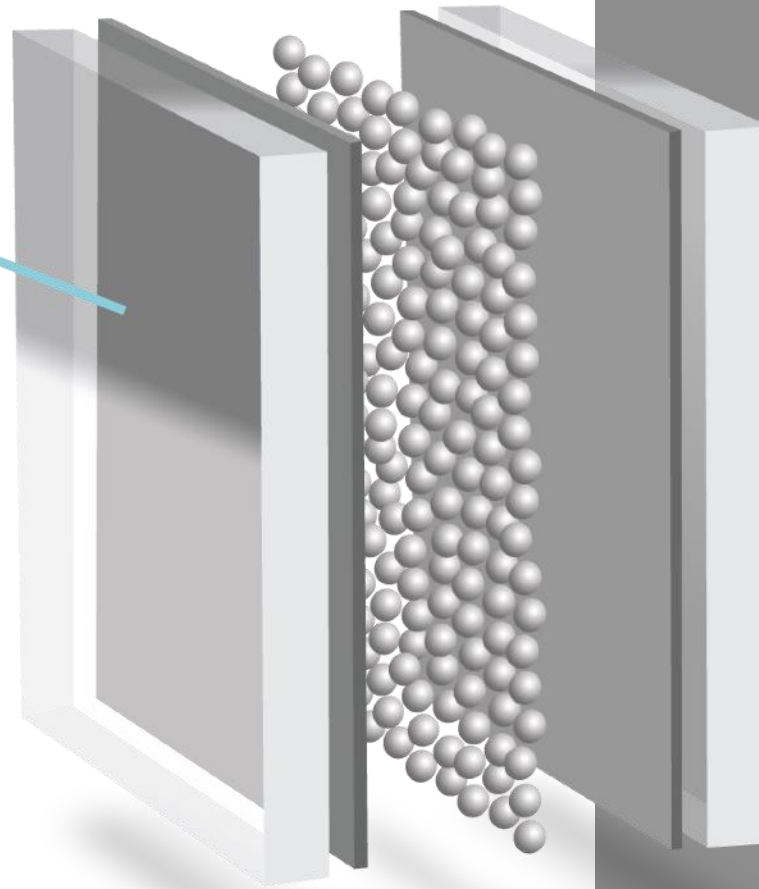


LIGHT

Switch OFF:

Particles scatter,
blocking light,
creating opacity.

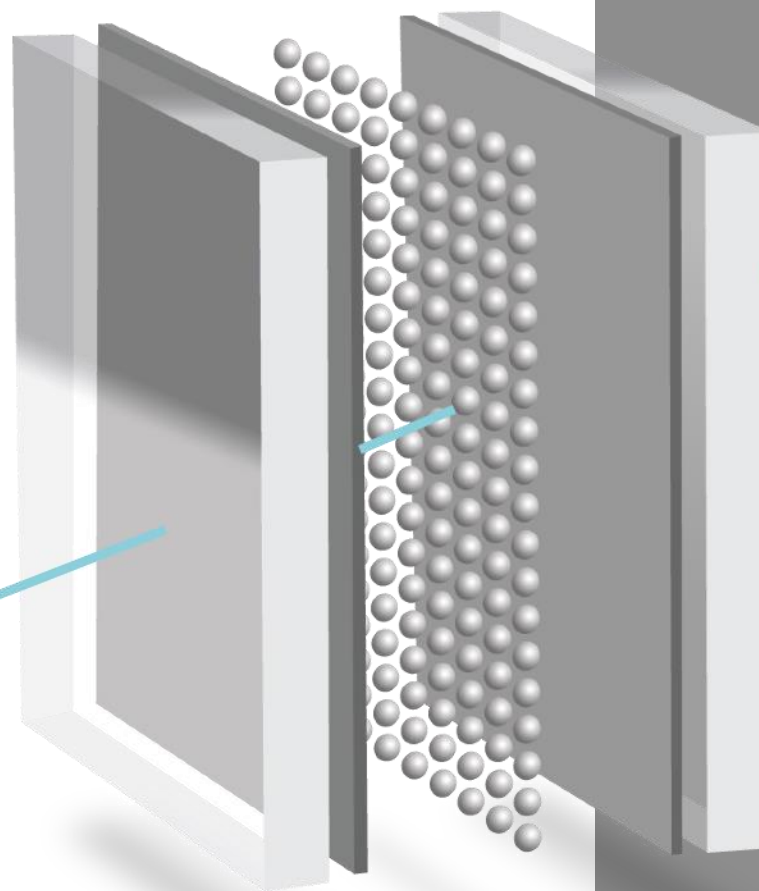
OFF



Switch ON:

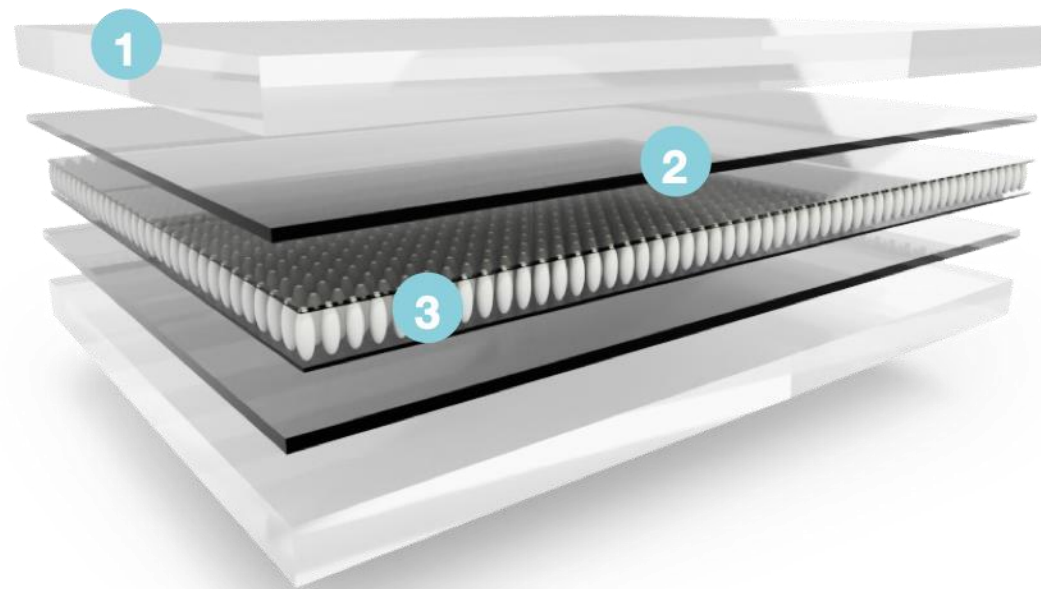
Particles align,
allowing light
to pass through,
creating transparency.

ON



LIGHT

How it's Made: LCG[®] Smart Glass Laminated Unit



1. Glass
2. EVA Adhesive Interlayer
3. Switch Film Interlayer

Specifications: LCG[®] Smart Glass Laminated Unit

- 1. Optical Performance measured using square wave signals provided by Gauzy Controllers
- 2. Haze tested on 'haze-gard i', by BYK. Laminated with PVB. Haze may vary based on interlayer. Results reported for Indoor at 25°C; HT at 80°C.
- 3. Film thickness may vary

	White		Dark	
Film Optical Performance				
Attribute	OFF	ON ₁	OFF	ON ₁
Parallel Light Transmittance	4%	78%	3.50%	46%
(VLT (Total Transmittance	65%	80%	37%	49%
Haze (ON) ₂	2.5%		2.7%	
Color Grade	L* = 84		L* = 64.04	
	a* = 0.5		a* = -1.74	
	b* = 6.5		b* = -3.27	
Film Technical Properties				
Switching Time	3ms			
Lifecycle	+ Million 18			
Operating Temperature	-20°C to +70°C			
Power Consumption	1-3W/m ²			
Film Thickness ₃	375μ			
Maximum Width(mm) ₄	1800		1500	
Cut-to-Fit	Sizes, Shapes, Busbar Position; Holes, Notches			
Glass Types	Annealed, Tempered, Clear, Low Iron/Ultra Clear			
Patterning Available	Yes			
Storage Conditions	-20°C to +60°C, <50% Humidity			
Grade	Indoor			
Electrical Performance				
Controller Types	Mini, Flex, Multiplex, Custom			
Operating Modes	Fade, ON/OFF, Dimming			

Patented Controllers



Features:

- On, Off, Dimming, Fade
- Easy installation
- Act as surge protector
- Large drive capacity
- Advanced protection features for better ROI
- Ultra-low voltage
- Easy connection to automation systems

Specifications:

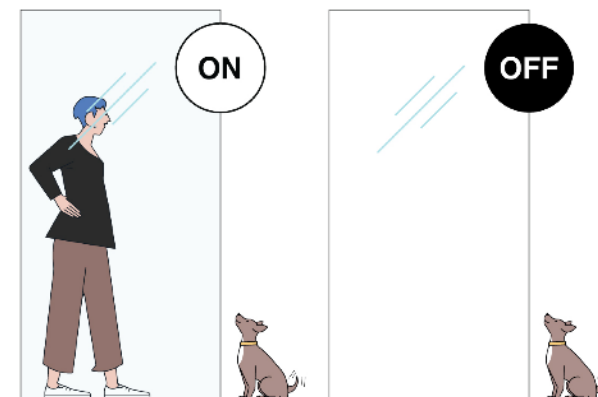
	Mini	Flex	MultiPlex
	Electrical Performance		
Universal Input	110/220VAC, 50/60Hz, 450mA	110/220VAC, 50/60Hz, 1360mA	110/220VAC, 50/60Hz, 1360mA
Output Voltage	42,48,70VAC Square wave, 25/30/32/50/60Hz, 600mA	42,48,70VAC Square wave, 25/30/32/50/60Hz, 1970mA	42,48,70VAC Square wave, 25/30/32/50/60Hz, 1970mA
(Supported LCG® Area (up to	4m ² / 43ft ²	10m ² / 107ft ²	10m ² / 107ft ²
(Dimensions (LxWxH) (mm	125x75x35	165x104x35	224x104x35
(Weight (controller only	44kg.	71kg.	94kg.
Wall Mounting	Built-in	Mounting Brackets	Mounting Brackets
Output Channel	1	1	to 32 1
Operating Configurations	On/Off, Fade	On/Off, Dimmer	On/Off, Blinds Fade
DMX	N/A	On/Off, Dimmer, Open Interface	DMX On/Off
COM	N/A	On/Off, Dimmer, Open Interface	On/Off, Fade
Cascade	N/A	0-10VDC	N/A

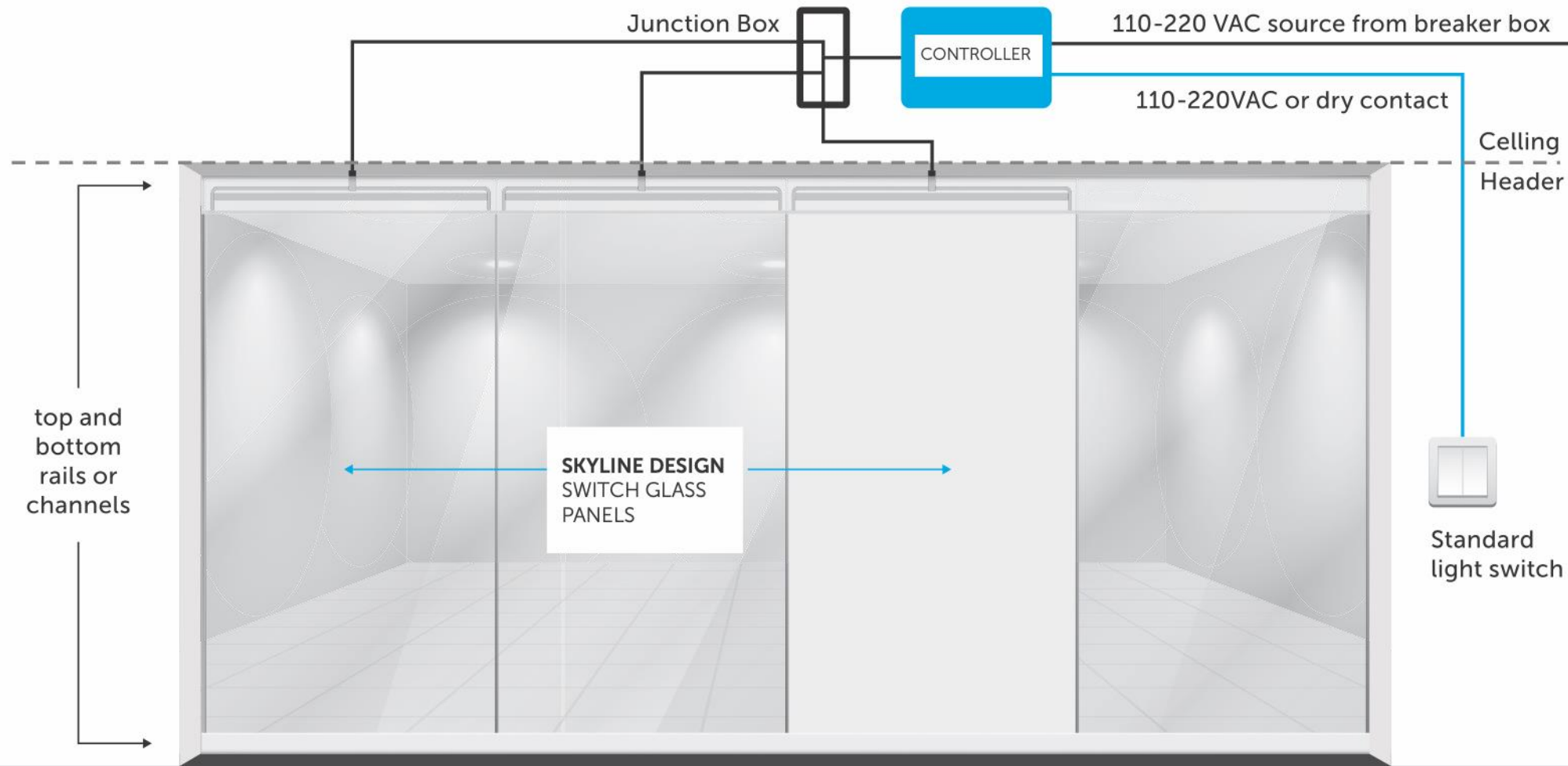
Compatibility:

- C, U, and T profiles
- Frameless butt glazed finishes
- Double glazed partitions with acoustic control
- Aluminum and wood modules
- Various types of doors & hinges (sliding, accordion, swing & other)

Controllability:

- Wifi touch panels
- RF remotes
- Traditional wall switches
- Integration with Google, Alexa, or custom program





Color & Pattern

Combine the smart technology of switch glass with the beauty of printed or etched patterning on the glass.



Color & Pattern

- **Eco-etch** / Etched patterning on the glass surface
- **Digital Printing** / Full color printing inside the glass
- **Color Interlayer** / Vivid and neutral color options



s
D | Skyline Design