



MCKENNA & COMPANY

---



boss



HBF  
TEXTILES

**SKYLINE**  
TRANSFORMING GLASS™

**spec**

Spacestor®

Symphony

**TURF**



MCKENNA & COMPANY



MCKENNA & COMPANY

**TURF**

# TURF DESIGN

New, Unique + Innovative Acoustic Solutions

---



PLATTER Ceiling Cloud



PLATTER Ceiling Cloud



PLATTER Ceiling Cloud



PLATTER Ceiling Cloud



PLATE Ceiling Cloud



PLATE Ceiling Cloud



PLATE Ceiling Cloud



MEGALITH Ceiling Scape

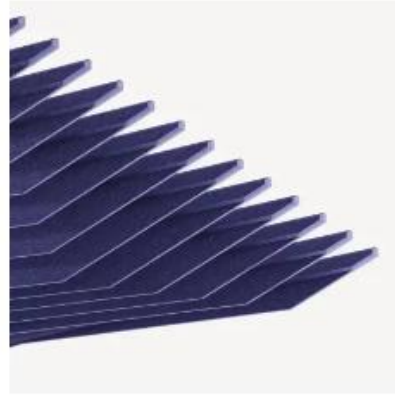
Blade Baffles



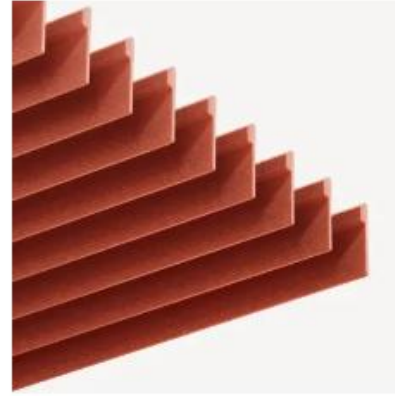
Carved



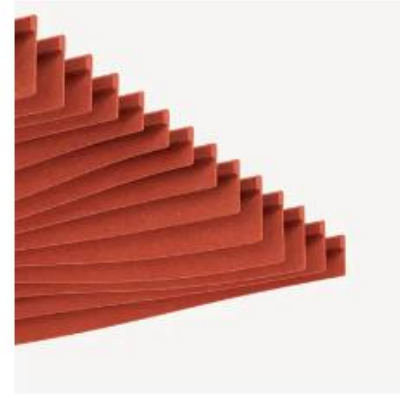
Contour



Ridge

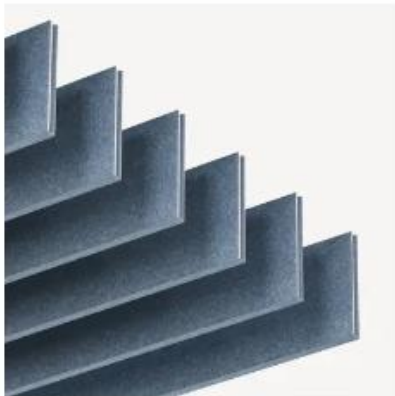


Straight



Torrent

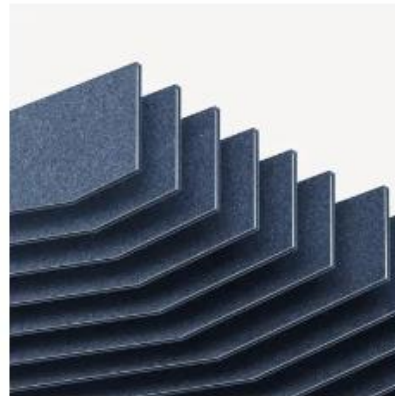
Layered Baffles



Datum



Doppelganger



Reveal



Timber



STRAIGHT Baffles



TIMBER Baffles



Doppelganger Baffles



Reveal Baffles

Dimensional Baffles



Block



Beam



Boom Stick



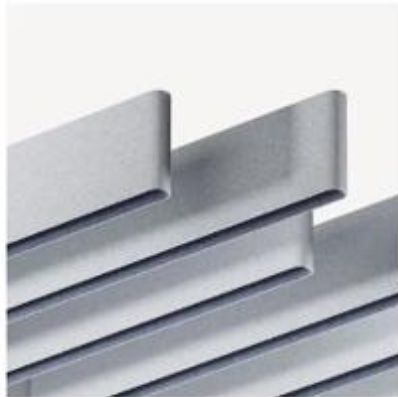
Drop



Freeform



Slab



Warp



Wedge

Lighting



Beam LED



Slab LED



BEAM Baffles



BLOCK Baffles



**PRINTING UNITED**  
ALLIANCE

Block & Freeform Baffles



FreeformBaffles





Freeform Baffles



HOME OF THE BRONCOS

BRONCOS



CHAMPIONSHIP CULTURE  
GOLF

TEAM RECORD		INDIVIDUAL RECORDS		ALL-STAR TEAM	
WINS	285	PUTTING	66	PUTTING	
PARS	581	PARS	141	PUTTING	
PARS	803	PARS	210	PUTTING	

Beam + Beam LED Baffles

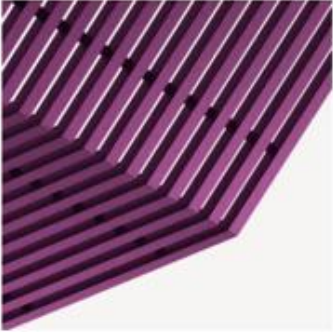


Drop Baffles

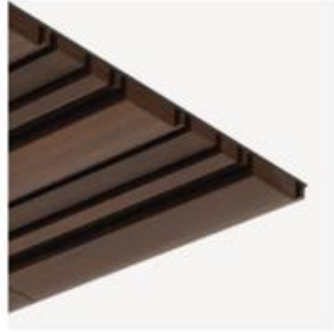


Custom Slab Baffles

Scapes



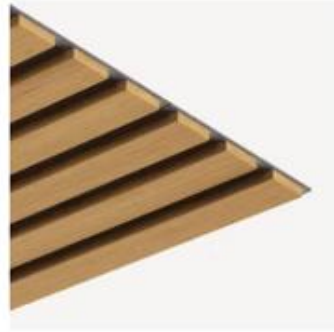
Arbor



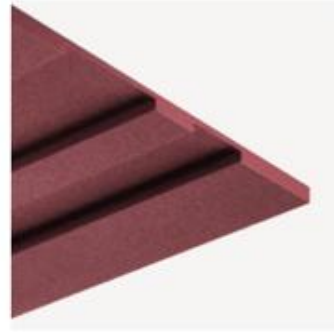
Barcode



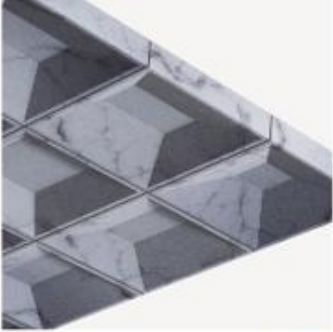
Grille



Linear



Metro



Pantheon



Plaid



Slice



Step



Swell



Switchblade



BARCODE Ceiling Scape



PANTHEON Ceiling Scape



GRILLE Wall & Ceiling Scape



SWELL Ceiling Scope



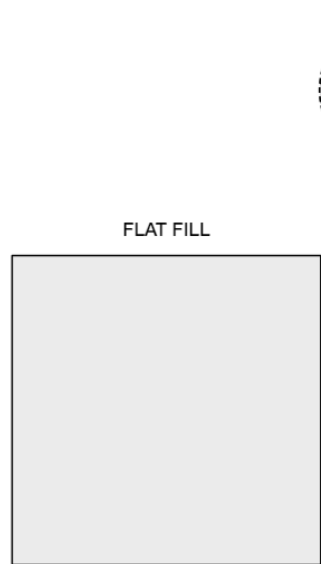
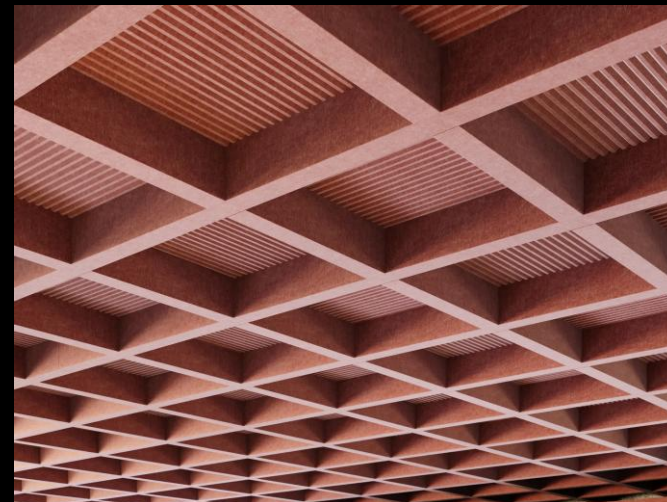
Plaid Ceiling Scape



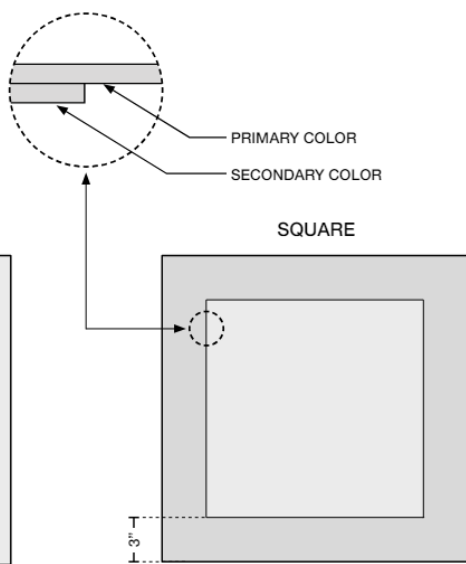
Plaid Ceiling Scape



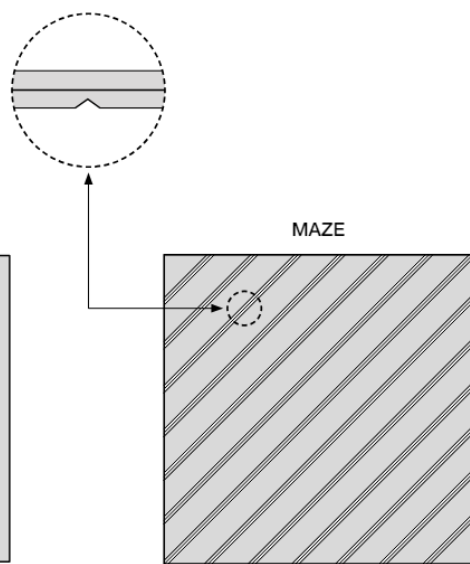
Plaid Ceiling Scape



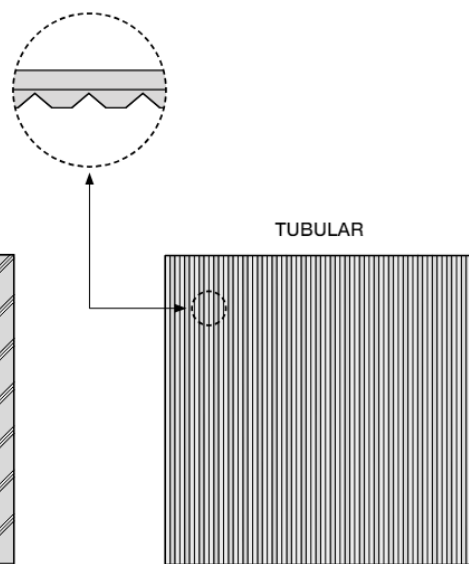
9mm thickness  
Available in all 9mm colors + textures



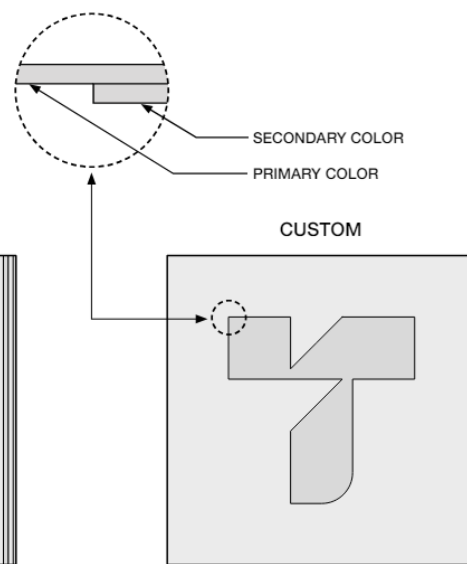
18mm thickness  
Available in all 9mm colors + two-tone



18mm thickness  
Available in all 9mm colors

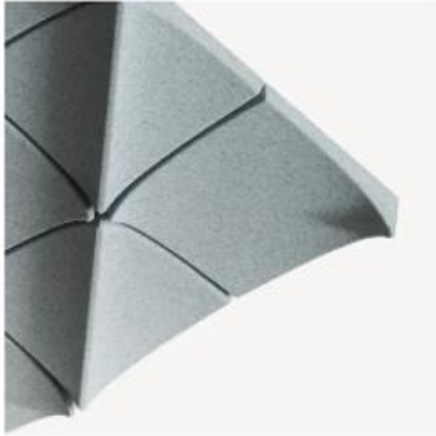


18mm thickness  
Available in all 9mm colors

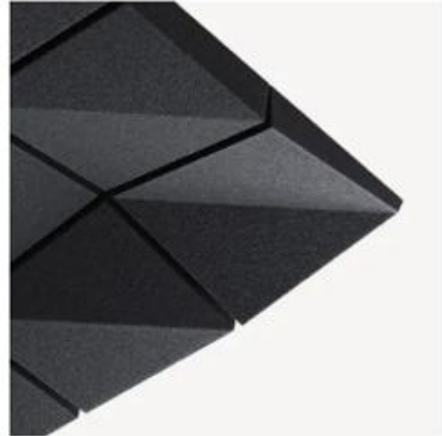


18mm thickness  
Available in all 9mm colors + two-tone

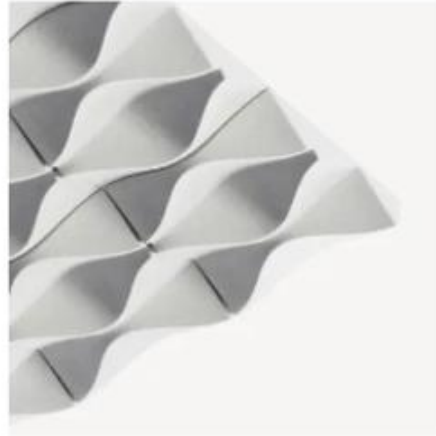
Formed Tiles



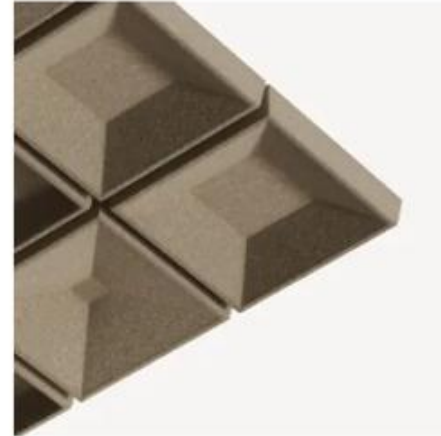
Arcade



Crease



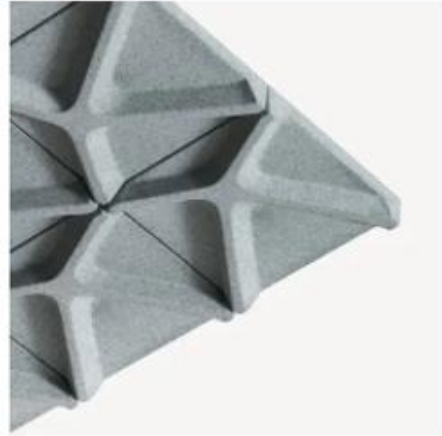
Mesh



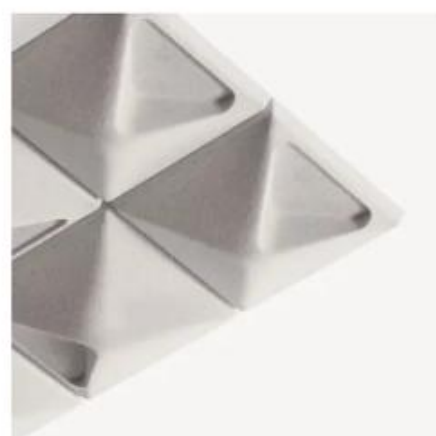
Port



Urban



Voronoi



Pyramid



Port Tiles



Port Tiles



ARCADE Ceiling Tile



ARCADE Ceiling Tile



Voronoi Tiles



MESH Tiles

Dimensional Tiles



Hex



Intersect

Flat Tiles



Amoeba



Hive



Plank



Slash



Tangram

Layered Tiles



Delta



Fracture



Labyrinth



Maze



Petal

Scapes



Acra



Barcode Wall



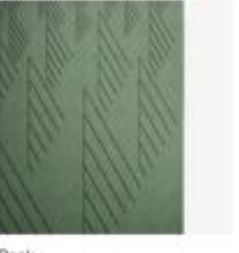
Grille Wall



Groove



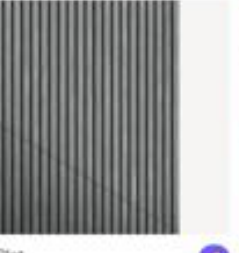
Linear Wall



Peak



Reed



Slat



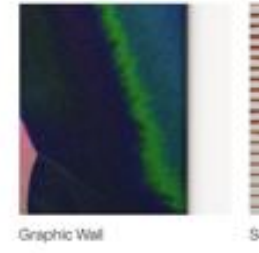
Torrent Tile



Tubular



Wave



Graphic Wall



Scanlines



REED Wall Scope



SLAT Wall Scope



SLAT Wall Scape





CARRARA Wall Scape

**NEW**  
**32 Exclusive Hues**



10 Topo Green



12 Grasshopper



11 Celadon



63 Safflower



64 Plantain



43 Orange Crush



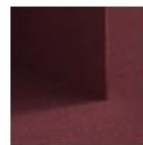
18 Ultisol



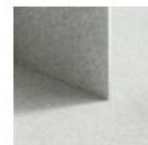
17 Blush



23 Red



15 Merlot



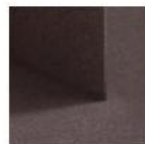
50 Ivory



33 Luminary



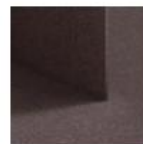
83 Holland Oats



82 Barley



34 Tonal Taupe



35 Bark



28 Indigo



30 Cyan



24 Royal Blue



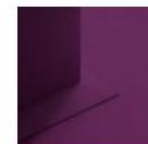
31 Azure



27 Jean Jacket



26 Faded Denim



40 Magenta



41 Dried Lavender



66 Pewter



05 White



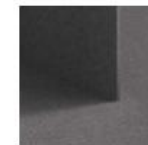
01 Cream



04 Light Grey



98 Storm



09 Damascus



06 Charcoal



07 Black



D01 WHITE ASH



D02 SILVER TEAK



D03 CLEAR MAPLE



D04 WASHED ASH



D05 MEDIUM OAK



D06 PLANKED OAK



D07 DARK WALNUT

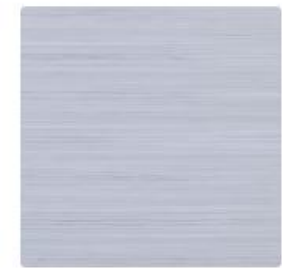


D08 BLACK PEAR



TURF Wood Grains

# Rift Cut



WT05 Rift



WT50 Rift



WT66 RIFT



WT04 Rift



WT09 Rift



WT98 Rift



WT06 Rift



WT07 Rift



WT01 Rift



WT82 Rift



WT83 Rift



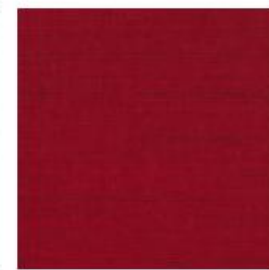
WT34 Rift



WT35 Rift



WT15 Rift



WT23 Rift



WT18 Rift



WT43 Rift



WT17 Rift



WT33 Rift



WT64 Rift



WT63 Rift



WT11 Rift



WT12 Rift



WT10 Rift



WT28 Rift



WT30 Rift



WT24 Rift



WT31 Rift



WT27 Rift



WT26 Rift



WT40 Rift



WT41 Rift

# Flat Cut



WT05 Flat



WT50 Flat



WT66 Flat



WT04 Flat



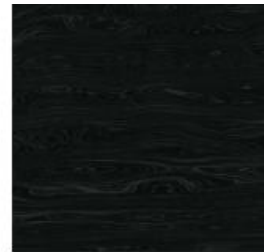
WT09 Flat



WT98 Flat



WT06 Flat



WT07 Flat



WT01 Flat



WT82 Flat



WT83 Flat



WT34 Flat



WT35 Flat



WT15 Flat



WT23 Flat



WT18 Flat



WT43 Flat



WT17 Flat



WT33 Flat



WT64 Flat



WT63 Flat



WT11 Flat



WT12 Flat



WT10 Flat



WT28 Flat



WT30 Flat



WT24 Flat



WT31 Flat



WT27 Flat



WT26 Flat



WT40 Flat



WT41 Flat

# Rotary Cut



WT05 Rotary



WT50 Rotary



WT66 Rotary



WT04 Rotary



WT09 Rotary



WT98 Rotary



WT06 Rotary



WT07 Rotary



WT01 Rotary



WT82 Rotary



WT83 Rotary



WT34 Rotary



WT35 Rotary



WT15 Rotary



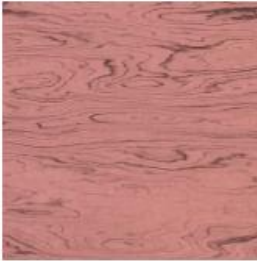
WT23 Rotary



WT18 Rotary



WT43 Rotary



WT17 Rotary



WT33 Rotary



WT64 Rotary



WT63 Rotary



WT11 Rotary



WT12 Rotary



WT10 Rotary



WT28 Rotary



WT30 Rotary



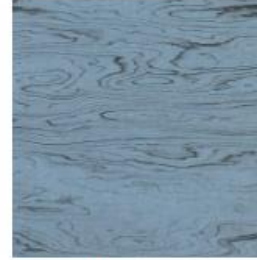
WT24 Rotary



WT31 Rotary



WT27 Rotary



WT26 Rotary



WT40 Rotary

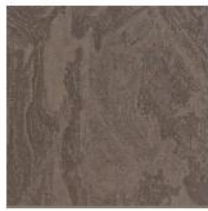


WT41 Rotary

# GRANITE



ST17 Granite



ST34 Granite



ST11 Granite



ST63 Granite



ST18 Granite



ST35 Granite



ST10 Granite



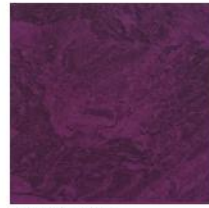
ST28 Granite



ST15 Granite



ST41 Granite



ST40 Granite



# MARBLE



ST05 Marble



ST01 Marble



ST33 Marble



ST64 Marble



ST50 Marble



ST83 Marble



ST66 Marble



ST26 Marble

# TRAVERTINE



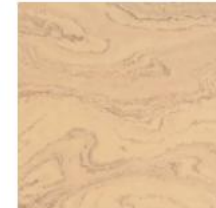
ST05 Travertine



ST01 Travertine



ST50 Travertine



ST64 Travertine



ST17 Travertine



ST83 Travertine



ST66 Travertine



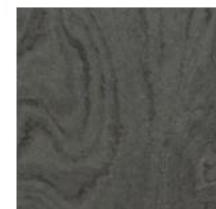
ST63 Travertine



ST18 Travertine



ST34 Travertine



ST11 Travertine



ST26 Travertine

# TURF Stone Textures

# CERTIFICATIONS

Acoustics: ASTM C 423

Fire Rating: UL tested ASTM E-84: Class A

VOC: UL tested ASTM D 5116 Compliant

Declare. LBC Compliant





MCKENNA & COMPANY



ANDALUSIA

HIGH DESIGN MEETS DIGITAL FABRICATION™

# ANDALUSIA

---



**Andalusia Design** is a specialty ceilings and walls manufacturer based in Austin, Texas.

We combine parametric design with digital fabrication to deliver high-design systems with unparalleled flexibility, speed and efficiency.

Utilizing three flexible and integrated systems including slat walls, perforated metal, and etched panels, combined with a variety of materials such as plywood, MDF, aluminum, steel, PET felt, moss, and lighting, virtually any design idea can be realized.



# Three Systems

## Ceilings and Walls

### Contour Slats™

Plywood or MDF slats anchored into a back board and intelligently keyed for easy installation

### Perforate™

Laser-cut steel and aluminum panels anchored from standard ceiling grid or Unistrut, or to the wall with hanging rails. Hardware provided by Andalusia

### Etch™

MDF panels carved with CNC machine, typically painted with optional inlay of additional materials.

NOTE: Patterns and designs can be used across systems for greater design continuity.



# Materials and Finishes

## Contour Slats™

Plywood  
MDF



Stained or  
Painted

## Etch™

MDF



Painted

## Perforate™

Steel  
Aluminum



Powder coat  
Dye sublimation  
(including exterior grade)

## Extras (available on all systems)

PET Felt

Integral lighting

Moss

Customer's Own Material

Acrylic

Metal





# Contour Slats™

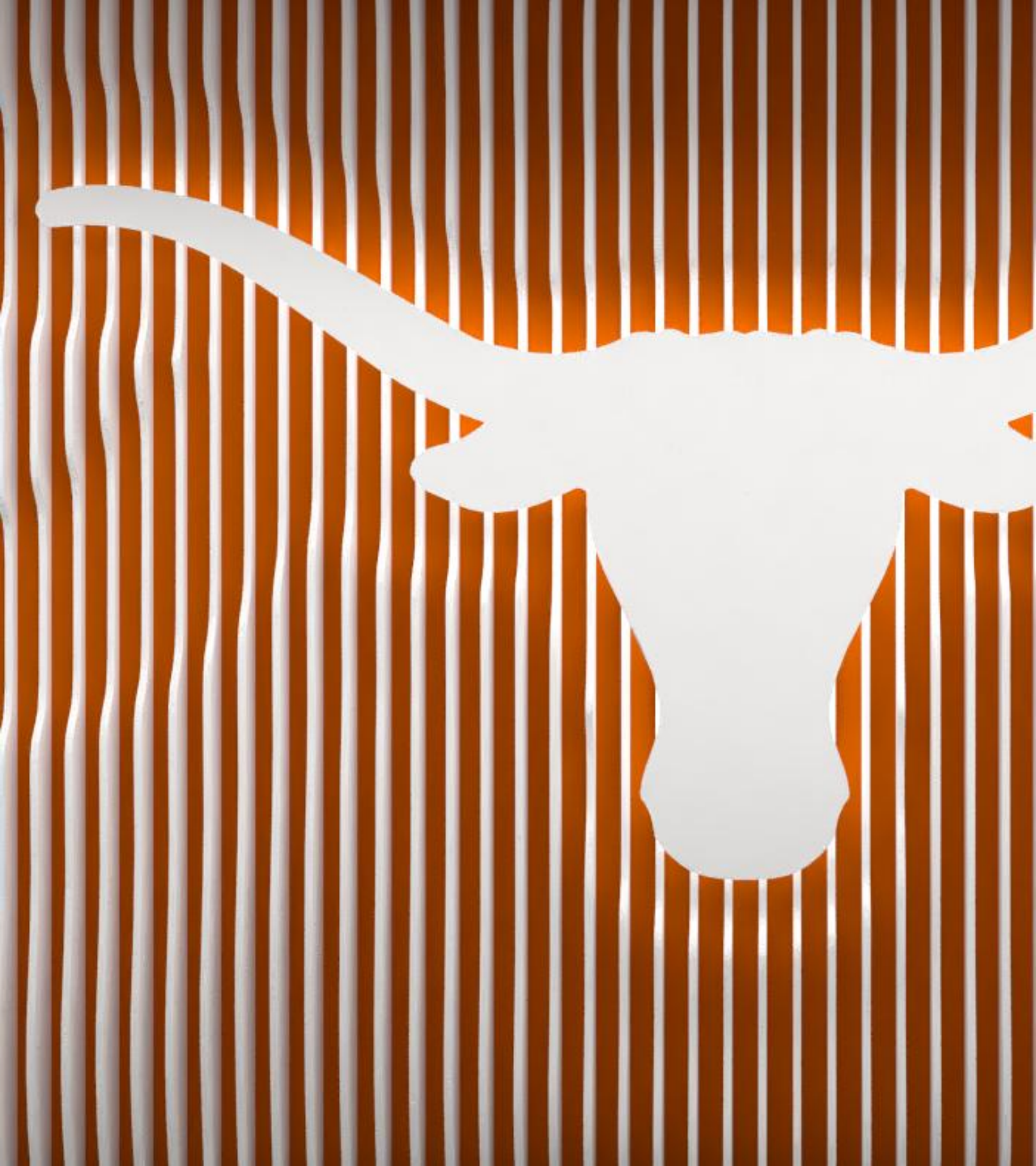
Ceiling, Wall &  
Space Divider Systems

Plywood  
Optional edge band  
Stain or natural

MDF  
Painted or raw/clear coat

Contour slats are individually keyed to specific locations on the back board, ensuring precise and easy installation





# Contour Slats™

Integral Solutions

PET Felt

Precision-cut signage

Integral lighting solutions

Customer's own materials





# Perforate™

Ceiling & wall systems  
with integral lighting option

Ceiling systems can be suspended  
from standard grid or Unistrut

Wall systems are hung on rails  
provided by Andalusia with simple  
drop-in installation





# Perforate™

Integral Solutions

Steel or aluminum

Powder coat

Dye sublimation printing

Integral lighting solutions

PET felt or acrylic back





# Etch™

Integrated wall panels

Painted MDF with:

PET Felt   Metal  
Moss      Lighting  
Acrylic    COM

Etch designs can be standard or easily created to incorporate logos, branding, custom patterns or materials



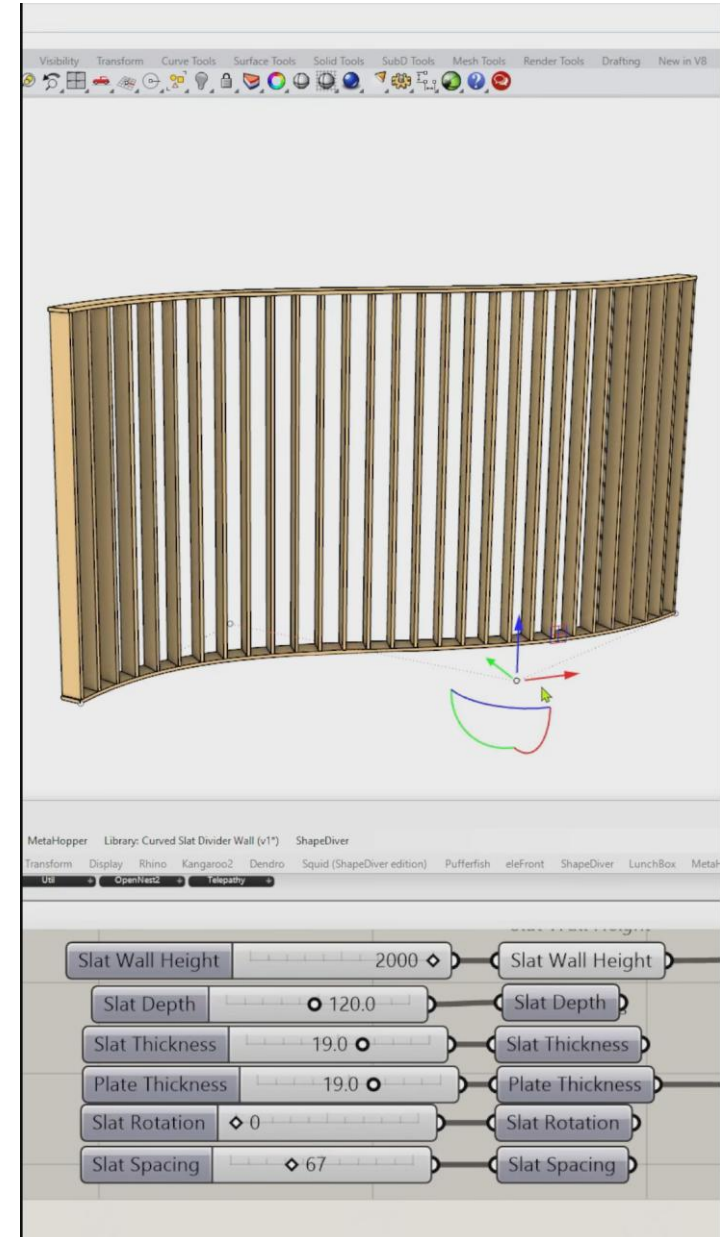
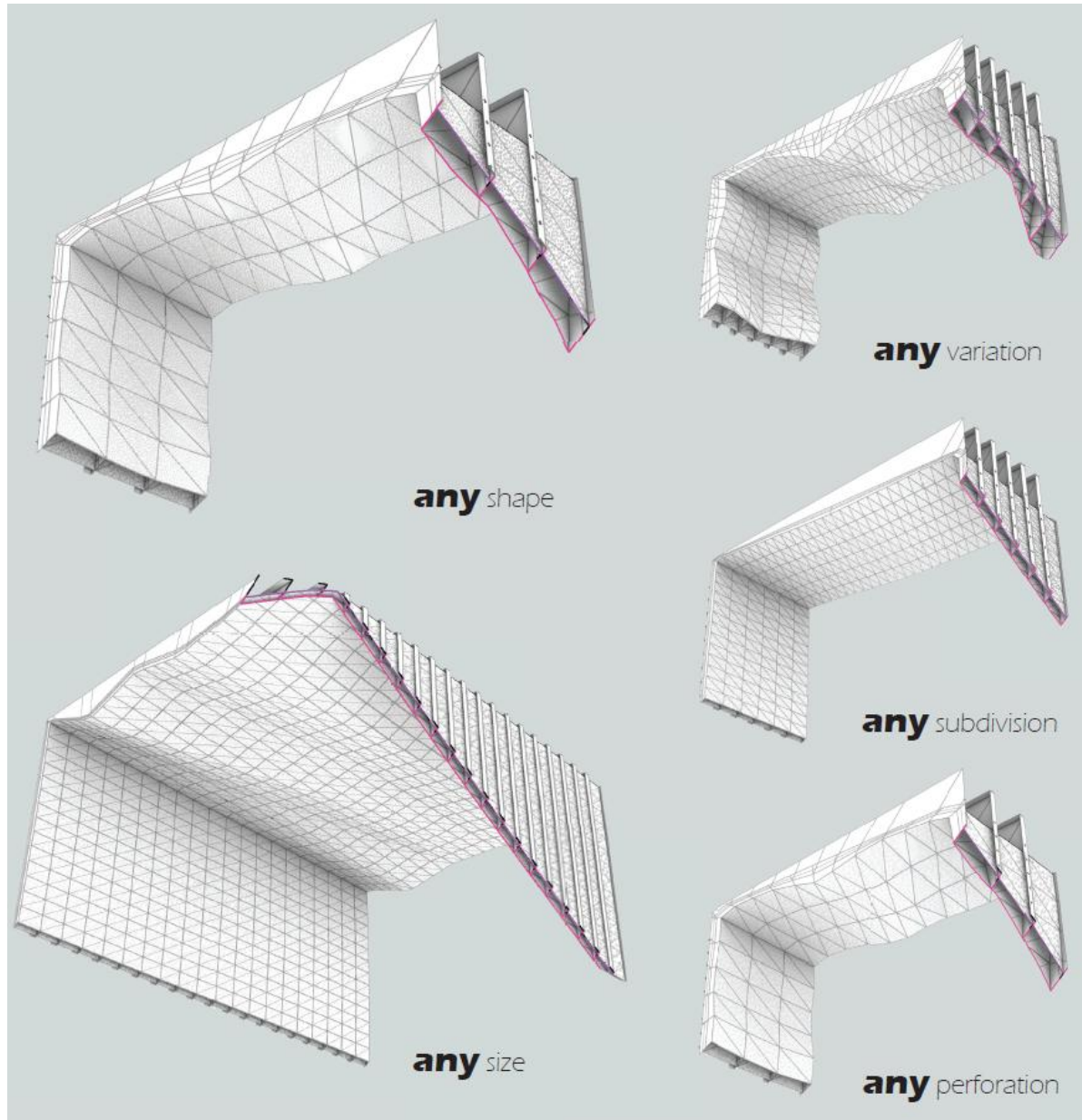


# Your own combination

Integrated wall and ceiling system  
with slats, perforated metal, and  
integral lighting.



# WHY USE PARAMETRIC DESIGN?



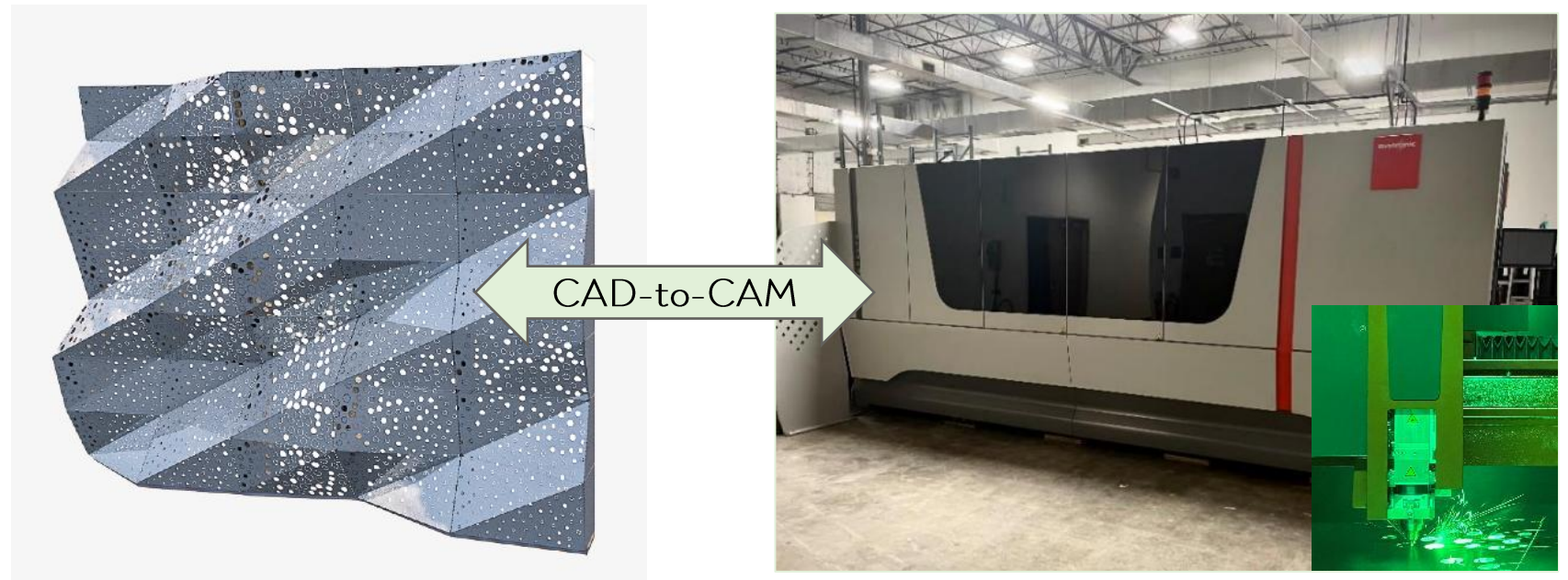


# PARAMETRIC DESIGN + DIGITAL FABRICATION

CAD and CAM now can talk to each other!

Traditional fabrication methods require design drawings to be translated and drawn over again in a language that a machine understands (CAM). This can significantly affect schedule and design intent.

Integrated parametric design ensures that what you design can be built, and means your designs are able to be fed directly into the machine with no loss in time or modifications to design.



Parameters may include: material quality (hardness, thickness, bendability, sheet size), the tools needed to machine and finish material, maximum size of finished product (ie, can it fit in a truck or elevator), attachments, design constraints (how to elements fit within design and react to other elements), etc.





The marriage of parametric design and digital fabrication reduces barriers to creativity and allows for:

- Greater design flexibility
- Tighter fabrication tolerance
- Fewer billable hours spent
- Reduced time reinterpreting design or misinterpretation of intent
- Fast fabrication (4-6 weeks)
- Lower costs





**PROVIDING ENERGY.  
IMPROVING LIVES.**

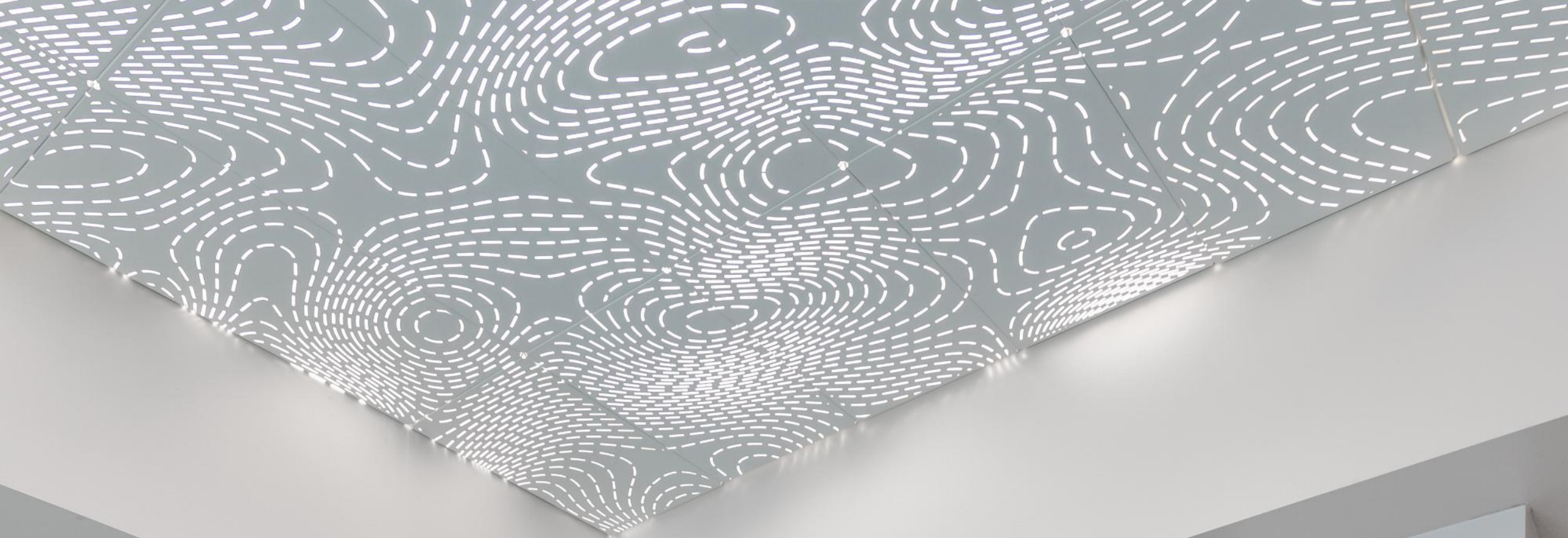
Branded Environments





Feature Walls





Ceiling Systems





Wall to Ceiling 



Wall to Ceiling





Space Dividers





Space Dividers





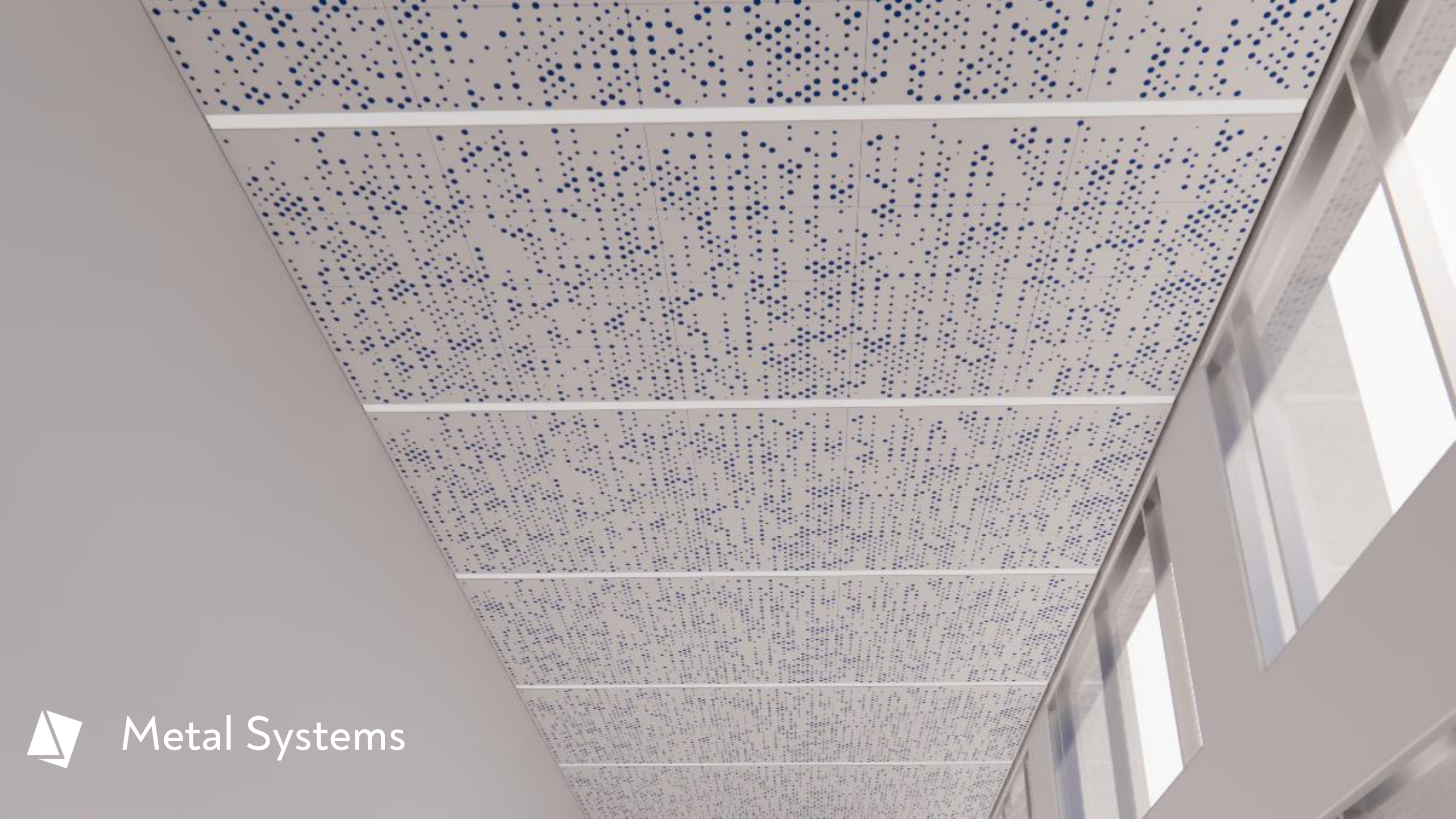
Integrated Lighting



# Integrated Lighting



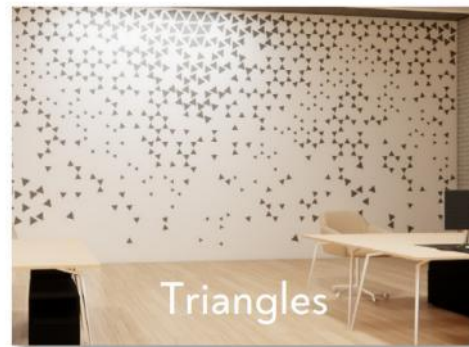
## Integrated Lighting



Metal Systems



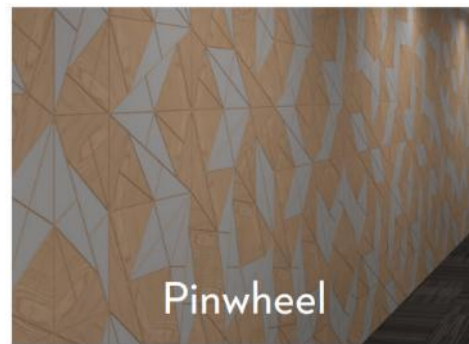
# Wood Etch Panels



Triangles



Maze



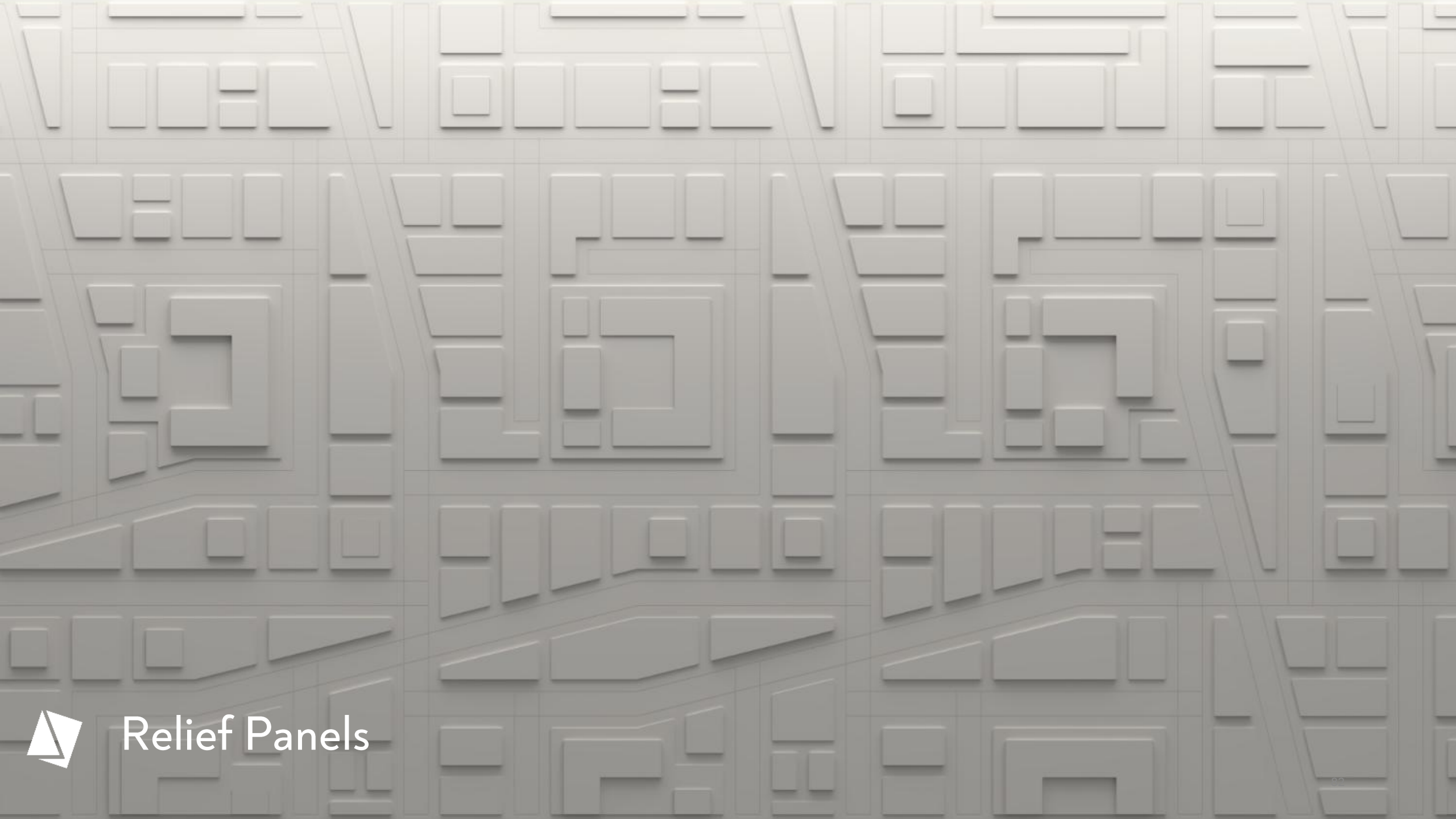
Pinwheel



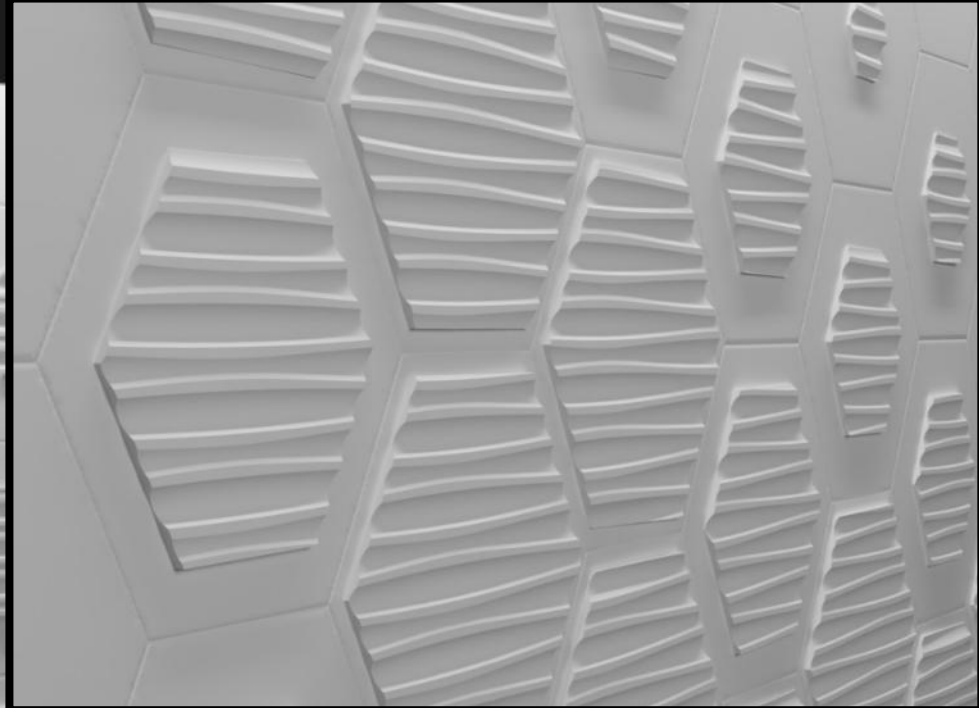
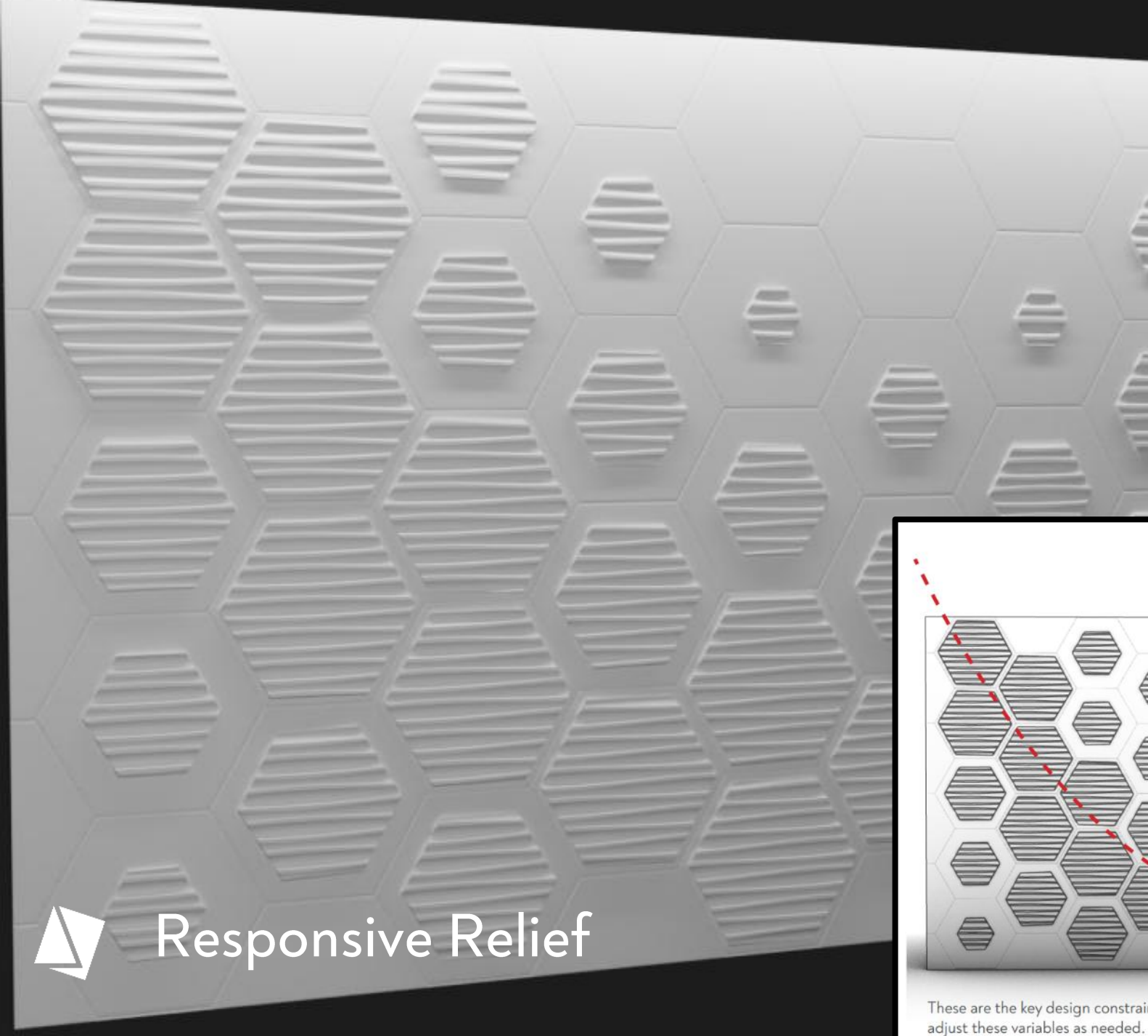
Truchet



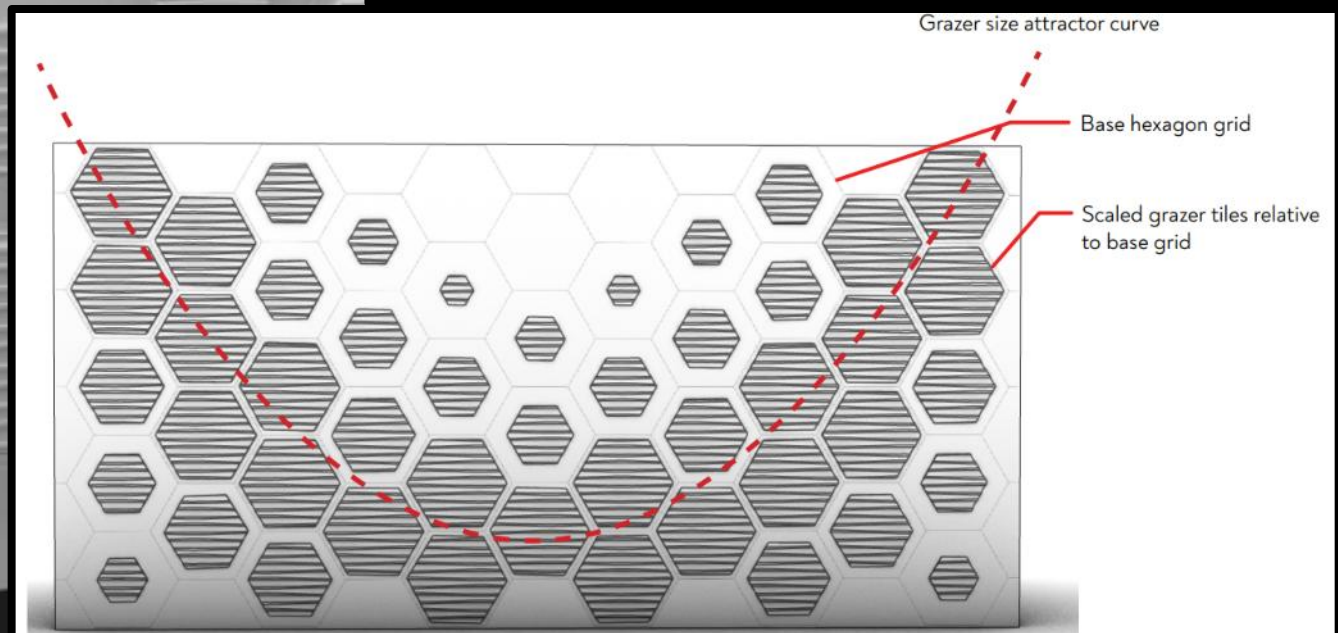
Street Grid



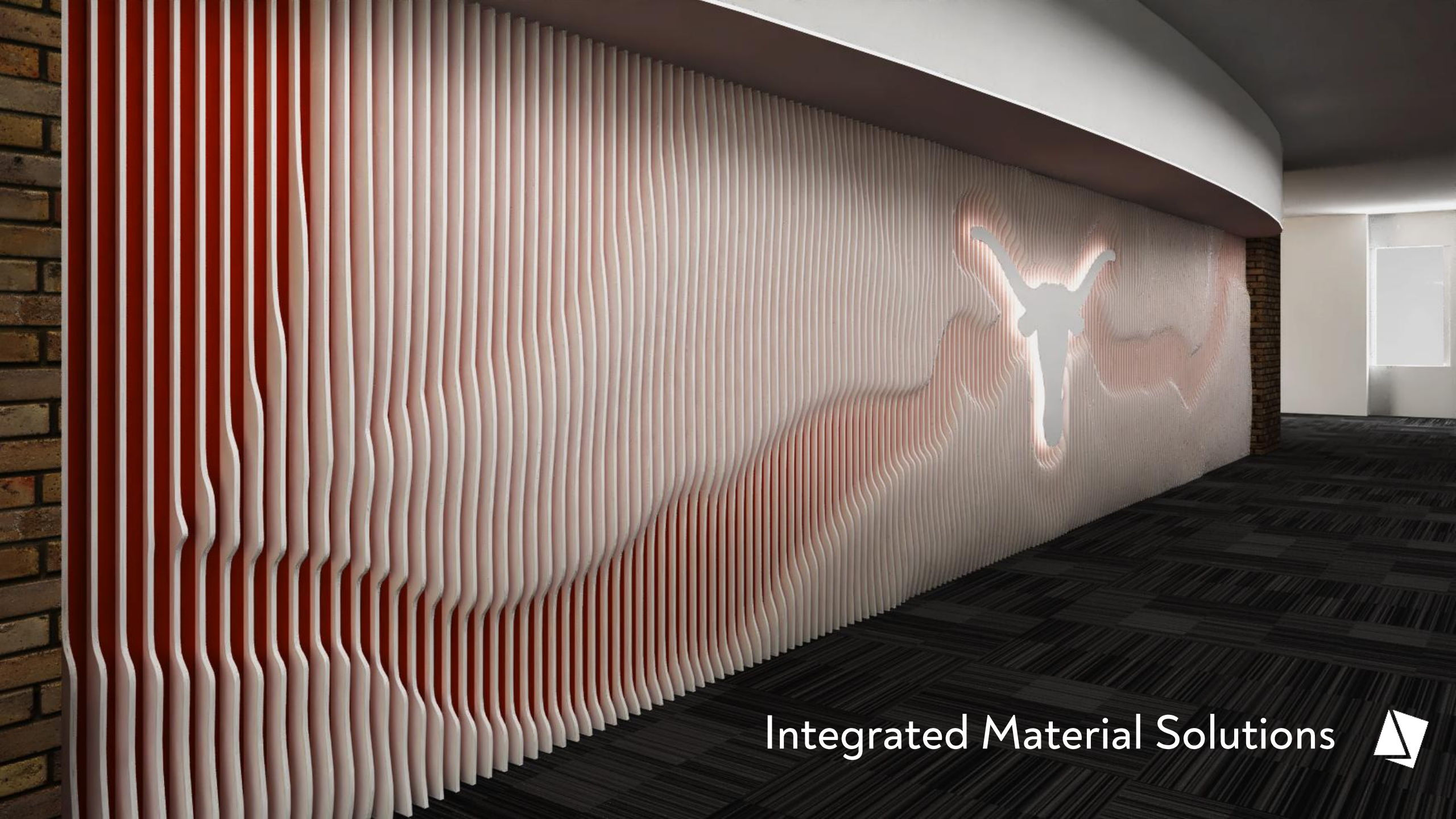
## Relief Panels



# Responsive Relief



These are the key design constraints we identified. Our parametric design system enables us to quickly adjust these variables as needed.



Integrated Material Solutions





Customer's Own Materials

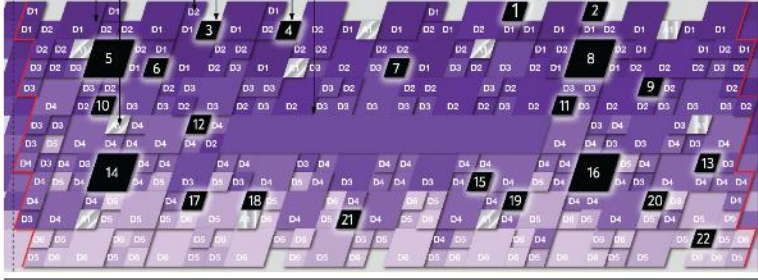


## INSTALLATION INSTRUCTIONS

Note: You may refer to this legend for file placement in subsequent steps. All positions are also marked in **black** sharpie on the back panels. The "D" keys refer to the file color. Each "D" plaque will have a Small, Large, and Illuminated variety. Each file key and size will be packaged together. Keep them in their original packaged groups for easy access and identification. Illuminated files have a unique position on the legend. Match the written number on the back of the file to the black numbered positions below and to the locations marked in **blue** sharpie on the back panel.

	Overall Tile Quantity (From Imagery)			Total
	Small Quantity	Large Quantity	Illuminated	
D1	21	10	2	31
D2	45	10	5	55
D3	45	10	6	55
D4	48	14	3	62
D5	38	6	4	44
D6	25	6	1	31
A1	11	0	1	11

Small Quantity + Large Quantity = Total  
Illuminated tiles included in small/large counts



Illuminated Tile Numbering



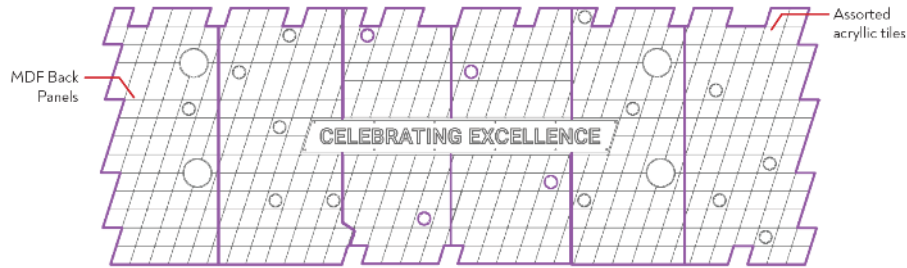
Normal Tile Numbering



Problem Solving

INSTALLATION INSTRUCTIONS

SYNOPSIS MILESTONE WALL

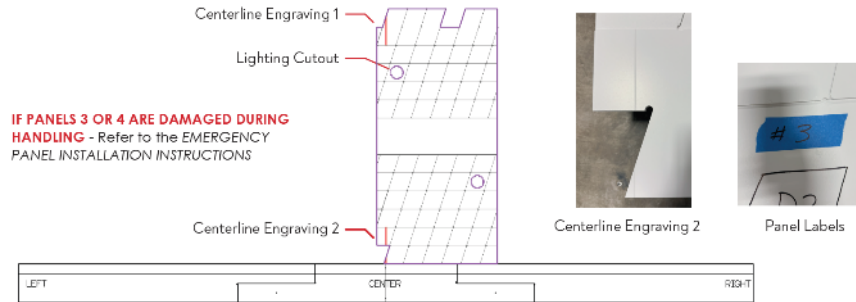


Note: The MDF panels backing the center sign are fragile due to thin sections. Handle with care while handling and mounting.

INSTALLATION INSTRUCTIONS

3. Position the Panel Alignment Rails on the wall at the desired installation height. Align the engraved centerline of the rails to the desired wall centerline. The rail centerline will later match up with Centerline Engraving 2 of Panel 4. Once placement is confirmed, secure the rails to the wall. Andalusia does not make official recommendations for rail mounting or hardware. The installer is responsible for ensuring a secure connection and proper leveling.

4. Position Panel 4 on the wall, aligning Centerline Engraving 2 with the corresponding mark on the Panel Alignment Rail.



IF PANELS 3 OR 4 ARE DAMAGED DURING HANDLING - Refer to the EMERGENCY PANEL INSTALLATION INSTRUCTIONS

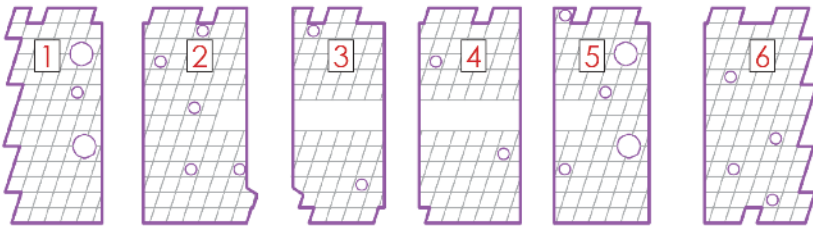
INSTALLATION INSTRUCTIONS

Steps:

1. Identify the Panel Alignment Rails (3). These will be temporarily fastened to the wall and used to align and mount the MDF back panels, before being removed again from the wall.



2. Refer to the purple outlines in the diagram below to identify and orient each panel. Each panel will also be labeled with blue painter's tape. Sections 2-5 contain thin, delicate areas where the sign will be installed—handle these with care.



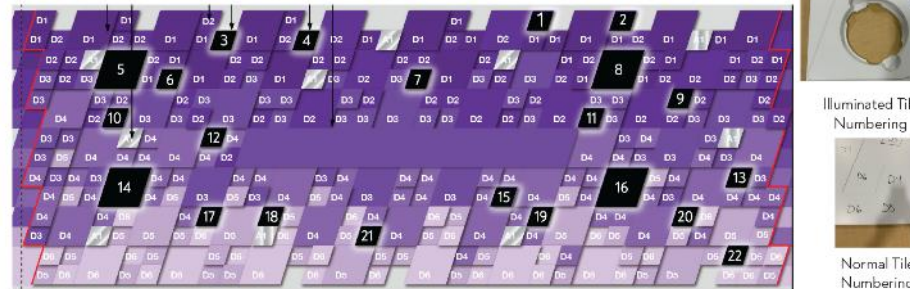
INSTALLATION INSTRUCTIONS

Note: You may refer to this legend for tile placement in subsequent steps. All positions are also marked in **black** sharpie on the back panels. The "D" keys refer to the tile color. Each "D" plaque will have a Small, Large, and Illuminated variety. Each tile key and size will be packaged together. Keep them in their original packaged groups for easy access and identification. Illuminated tiles have a unique position on the legend. Match the written number on the back of the tile to the black numbered positions below and to the locations marked in **blue** sharpie on the back panel.

Overall Tile Quantity (From Imagery)

	Small Quantity	Large Quantity	Illuminated	Total
D1	21	10	2	31
D2	45	10	5	55
D3	45	10	6	55
D4	48	14	3	62
D5	38	6	4	44
D6	25	6	1	31
A1	11	0	1	11

Small Quantity + Large Quantity = Total  
Illuminated tiles included in small/large counts



# Detailed Installation Guides





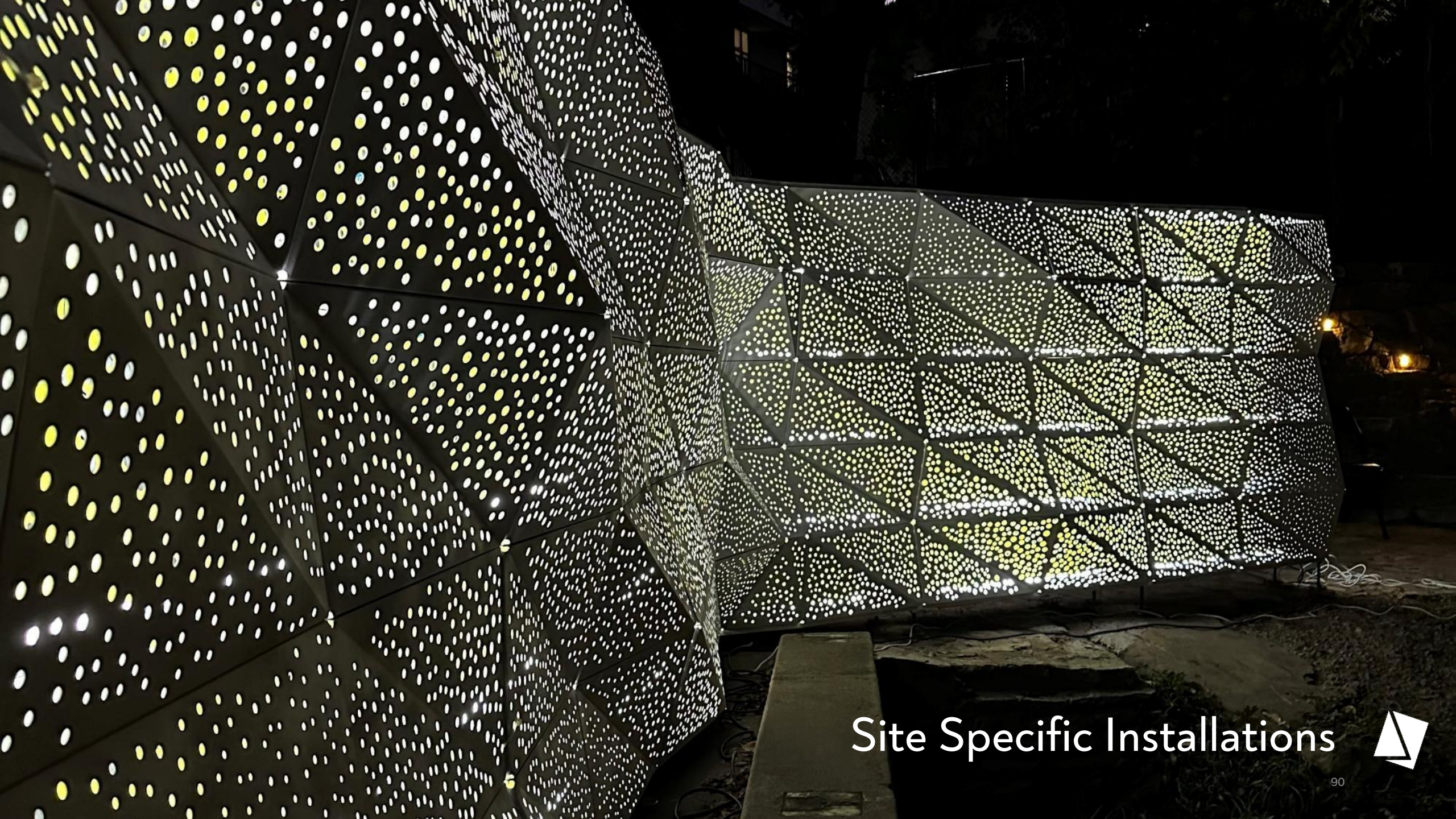
Responsive Designs

All products are intelligently keyed and numbered for ease of installation



Intelligent Installation





Site Specific Installations





Site Specific Installations

# Working with us

## DESIGN PHASES

Services and Outputs:

- Collaborative and iterative design development, starting as early as concept design
- 3D parametric model development; ability to collaborate in Rhino and Revit or output to any standard CAD platform
- Renderings in Enscape, V-Ray
- Real-time pricing information during design iterations and design-for-budget / VE support
- Thorough product design proposals
- Physical material samples and color swatches
- Custom samples to demonstrate form / function of unique designs

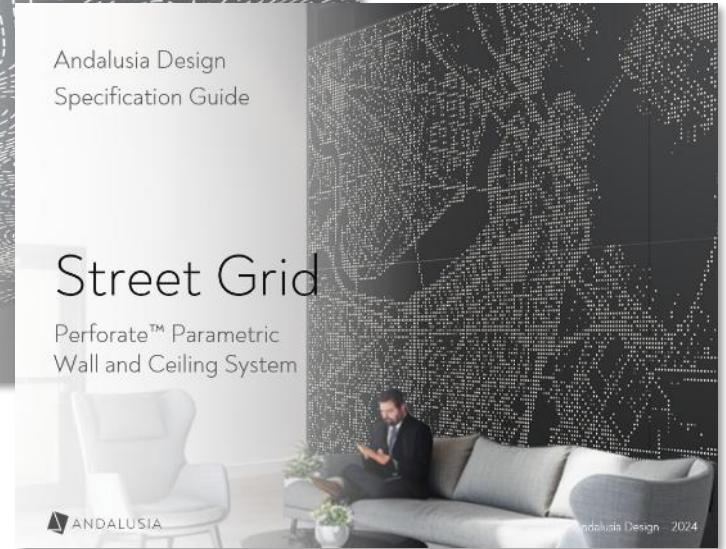
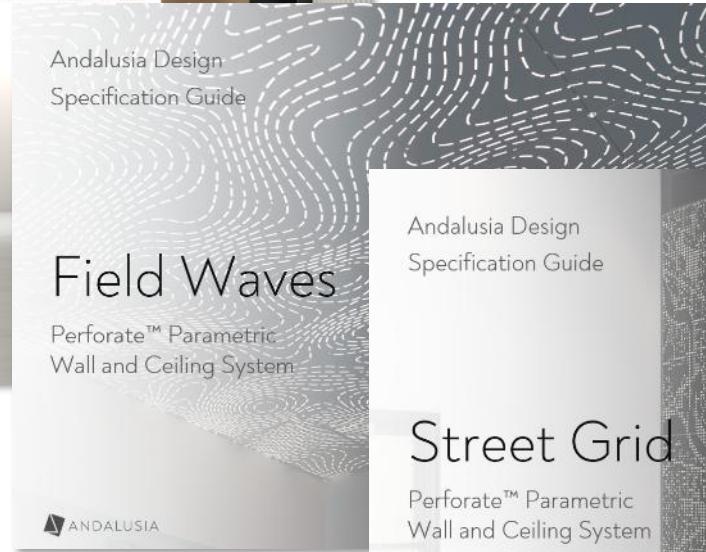
Assistance with client-facing presentations, as desired

## POST-DESIGN / SPEC SUPPORT

Services and Outputs:

- Technical drawings – elevations, sections, details
- CSI MasterSpec document
- Comprehensive dimensions, thickness, weight information
- Final digital 3D model
- Final contractor net pricing
- Performance data, including ASTM E84 fire ratings, structural data, acoustic analysis, along with necessary supporting test data
- Sustainability certifications, EPD, HPD, Declare
- Detailed step-by-step installation instructions
- Maintenance and warranty information
- Reference part numbers and details
- Andalusia contact information





# Specifications Guides

Surface: 3D Model, Drawings, or just basic dimensions

Direction: Apply wall mounted panels to grey surfaces displayed in rendering.



Inspiration

Reference precedent images



Design Brief

Display the Ohio River around Evansville



Design Support Case Study #1





V1 - TERRAIN



V2 - RIVER



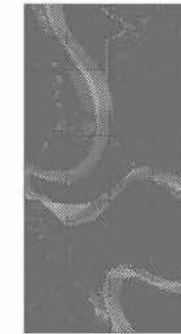
V3 - FLOW



V1 - TERRAIN



V2 - RIVER



V3 - FLOW

ANDALUSIA

DRAWING: MAY 2017 REFLECTORIAL DESIGN OF PRODUCT

OP. DR. JOSE DIACONIS HOSPITAL, PERFORATE WALL

SEVILLE, SPAIN

2017

1 OF 4

### INITIAL DESIGN ELEVATIONS





V1 - TERRAIN



*Tone down  
the amount of  
perforations.*



V1.1 - TERRAIN



V3 - FLOW



*Add some more  
perforations,  
similar to V1*



V3.1 - FLOW





MCKENNA & COMPANY

SKYLINE

# SKYLINE DESIGN

---



# SKYLINE

TRANSFORMING GLASS™

## ◆ Time Tested

Over **40 years** of Chicago-made glass products.

## ◆ Endless Possibilities

Customizable solutions allow you to tailor everything from glass thickness and shapes to patterns, graphics, and textures

## ◆ Here to Help

With the widest range of glass products in the market, Skyline's expert staff is here to help every step of the way.

## ◆ One Stop Shop

Skyline makes all products in-house, which allows for tight quality control and competitive pricing.

## ◆ Designer Collabs

Skyline has an extensive Pattern library including collections by renowned artists, product designers, and photographers.



# Jill Malek's Glass Murals Bring Natural Forms to the Built Environment



Skyline, Chicago-based studio known for pushing the boundaries of architectural glass, debuts their latest collaboration with New York designer Jill Malek at NeoCon 2025. Murals on Glass brings five of Malek's large-scale abstractions of the natural world to the clean, durable substrate of glass.

Known for bespoke dimensional wallcovering and unique textiles, Malek's designs are intended to soften the built environment with the sensitivity of nature. This and her new glass collection reflects research linking nature-based visuals to improved mood, attention, and emotional regulation, making Murals on Glass especially suited for human-centered spaces that prioritize neuroinclusive design.

"I am so excited to continue my collaboration with Skyline and offer some of my most popular mural designs as glass solutions." Jill Malek said in a recent interview, "This collection will be a beautiful intersection of color palettes inspired by dawn and dusk, translucent light, and soft patterning on large scale glass."

*Murals on Glass* brings five of Jill Malek's large-scale abstractions of the natural world to the clean, durable substrate of architectural glass.



Alpenglow



Iceland



Into the Woods



Sedona



Tulip

# SKYLINE

---

Made to order in panel sizes up to 72" x 144"

---

Designs register seamlessly across multiple panels for large-scale installations

---

Available in a range of glass translucencies for partitions, wall cladding, and artwork

---

Multiple colorways and customization available

TRANSFORMING GLASS SINCE 1983

[skyline.glass](https://skyline.glass)

SKYLINE

# Alpenglow

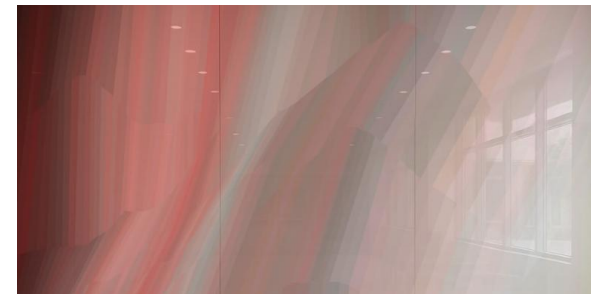
by Jill Malek



Alpenglow - Topaz



Alpenglow - Earth



Alpenglow - Garnet



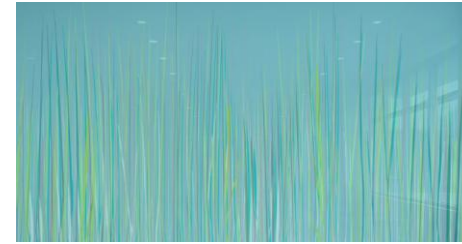
Alpenglow - Mica

# Into the Woods

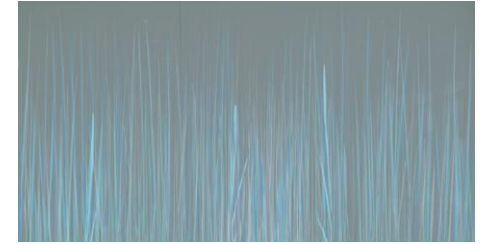
by Jill Malek



Into the Woods - Thistle



Into the Woods – Moss



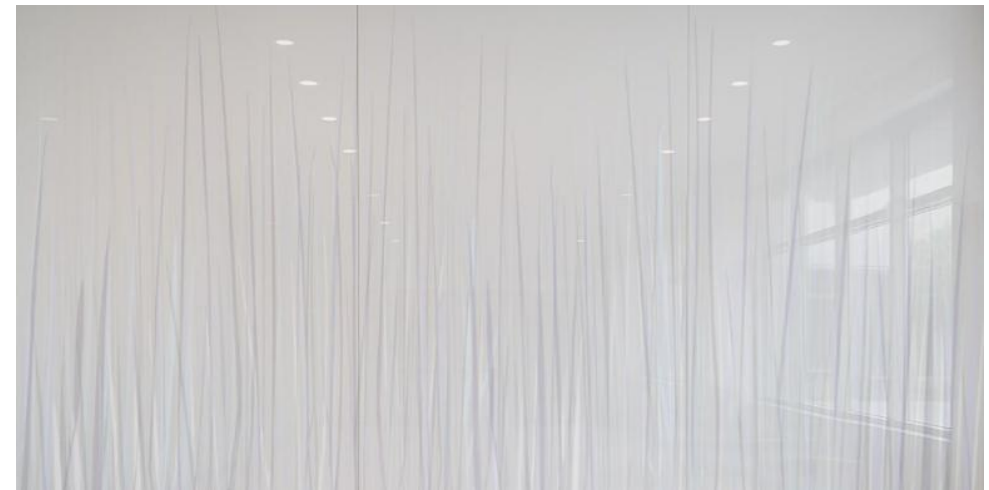
Into the Woods – Blue Grass



Into the Woods - Blossom



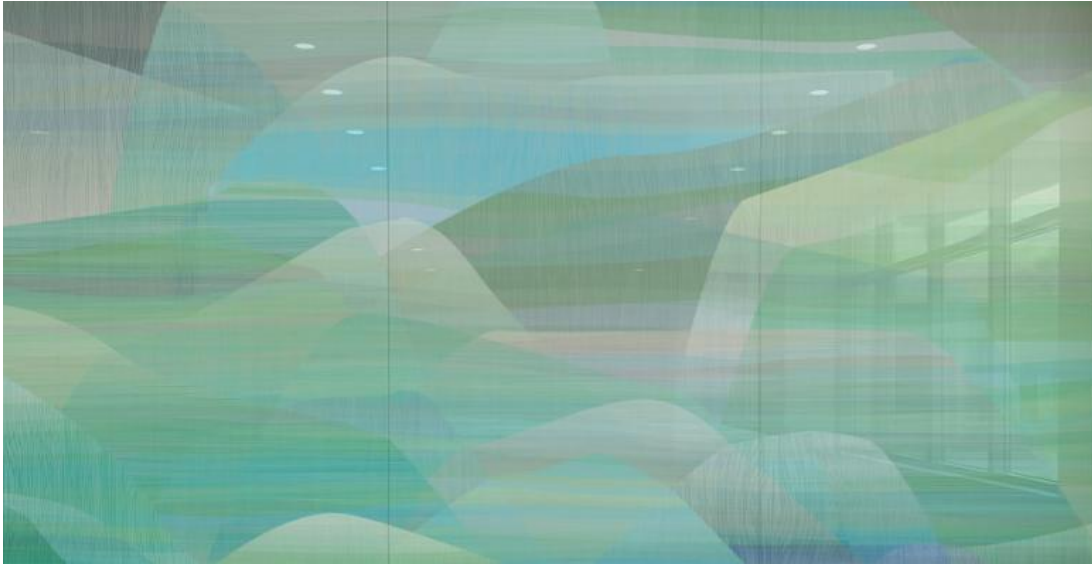
Into the Woods - Wheatspun



Into the Woods - Lilac

# Sedona

by Jill Malek



Sedona - Spring



Sedona - Golden Hour



Sedona - Dusk

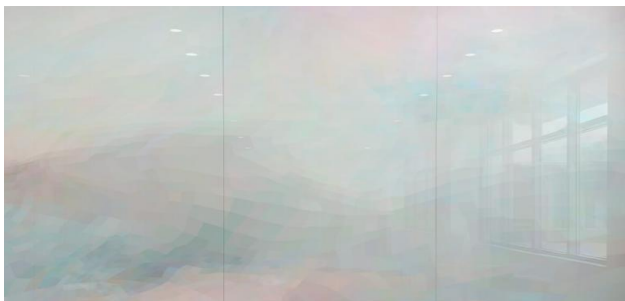


Sedona - Sunset

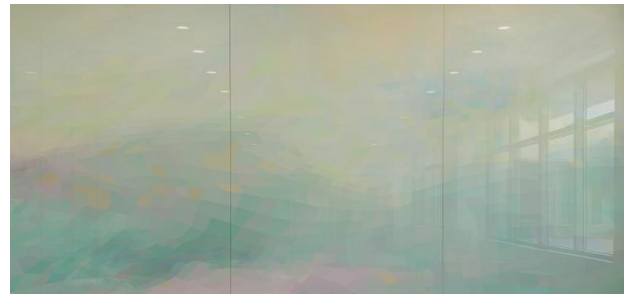
# Iceland

by Jill Malek

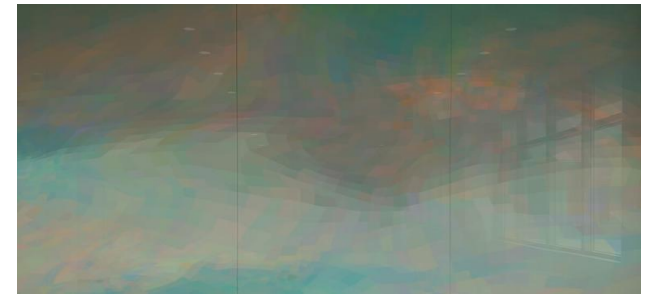
Iceland - Waterfall



Iceland- Pastures



Iceland – Northern Lights



Iceland - Verdant

# Tulip

by Jill Malek



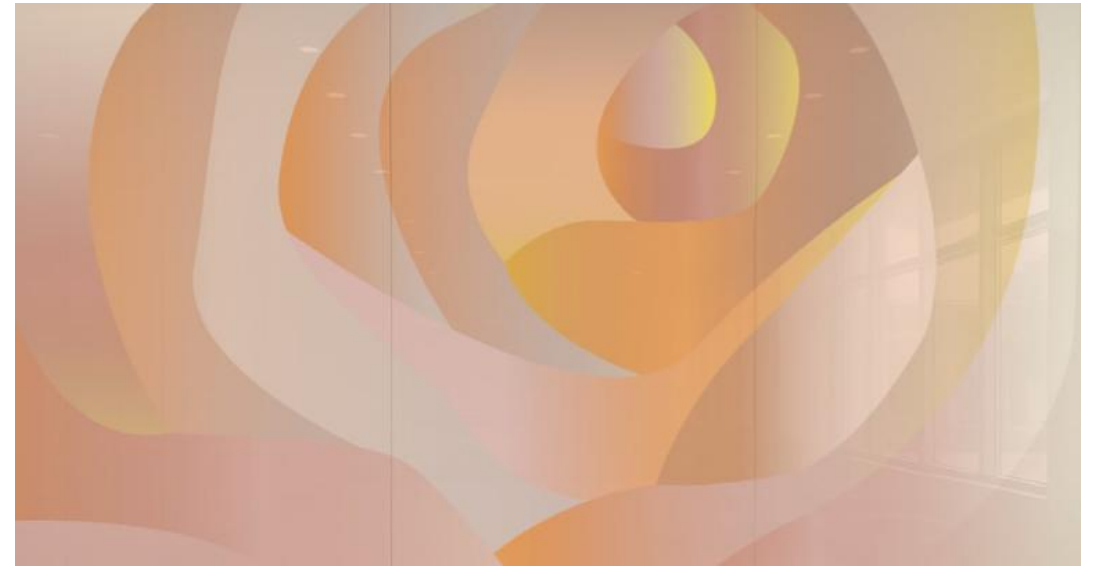
Tulip – Powder Blue



Tulip – Rose Pearl



Tulip – Rose Gold



Tulip - Sunset

# SKYLINE

## Markets

- ◆ Healthcare
- ◆ Interiors
- ◆ Exteriors
- ◆ Public Art
- ◆ Glassboards
- ◆ Decorative Film



# Techniques

- ◆ Etching & texture
- ◆ Digital Printing
- ◆ Vitracolor Back-painting
- ◆ Glassboards
- ◆ Decorative Film
- ◆ Smart Glass & film



Vitracolor®



Digital Printing



Laminated



Eco-etch®

SKYLINE

# Techniques Eco-etch

Recycled aluminum oxide permanently blasts a design into glass.

The resulting surface is remarkably durable and can be used in both interior and exterior installations.

Skyline's proprietary process allows for creative control, supporting a design that registers perfectly across panels.



SKYLINE Eco-etch

SURGERY  
CENTER



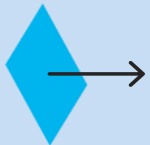
Mercy Health by Champlin Architecture  
Cincinnati, OH  
Etched glass partitions

SKYLINE

# Techniques Digital Printing

Faithfully transfer designs directly onto glass using Skyline's digital printing studio.

Through color matching technology and the support of a specialized team, the quality of Skyline's printing is unparalleled in the industry.



PennState Health

Penn State Health by Payette  
Custom digitally printed glass

SKYLINE

# Techniques Digital Printing

Following the printing, the ink becomes permanently integrated into the glass during the tempering process, ensuring the ultimate resilience against scratches, fading, and cleaning damage.





**PennState Health**

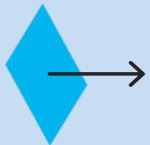
**Penn State Hershey Children's Hospital**  
by Payette / Selbert Perkins  
Hershey, PA  
Digitally printed glass

SKYLINE

# Techniques Back-painting

Vitracolor Back-Painting is an efficient in-house process to create a perfectly opaque surface for writable glass boards and wall-cladding.

The consistent high quality of Skyline's method, coupled with advanced color-matching capabilities, makes Vitracolor back-painted glass an elegant choice for a variety of uses.



**SKYLINE** Back-painting



**UNITED** 

UNITED terminal at LAX by KrueckSexton  
Los Angeles, CA  
Etched pattern + Metallic silver Vitracolor

# SKYLINE

## Laminated Glass

- Eco-conscious design and process uses EVA (*ethylene-vinyl acetate*) interlayers which allow for lower processing temperatures
- The ultimate privacy package combining numerous levels of acoustic and visual control
- Durable and optically clear product
- Interior and exterior grade



**SKYLINE** Laminated



STAIRS DOWN TO BLUE LINE

To trains



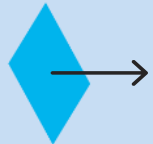
Chicago Transit Authority  
Blue Line @ Addison by Muller + Muller  
Art by Francesco Simeti

SKYLINE

# Techniques Glassboards

Glass markerboards with a consistent, opaque back-coat to create a writable surface. Match to any color or add graphics & logos.

- Sustainably made in our Chicago factory
- Guaranteed to last the life of the wall
- Easy to install with z-clip
- Frame available in any size



# SKYLINE Glassboards



Comcast by Design Blitz  
Red writable glass boards

Happy  
Healthy  
Healing



10:51

Medical chart with patient information, including name, date of birth, and medical history.



Mercy Health by Champlin Architecture  
Cincinnati, OH  
Custom writable glass boards

**SKYLINE** Glassboards

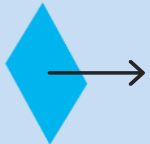


SKYLINE

# Techniques Smart Glass

Instantly switch glass from clear to private with the flip of a switch.

- Low voltage controller can stay on for 24 hours/day with no burnout
- Fade, ON/OFF, dimming
- Sizes up to 70" x 144"
- Custom shapes & designs available



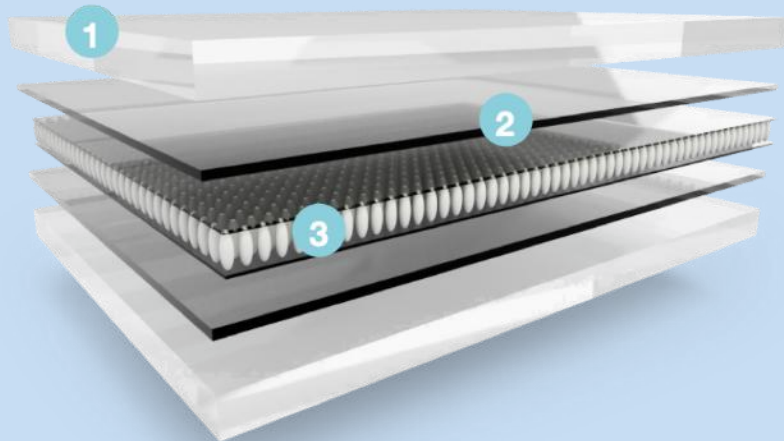
**SKYLINE** Smart Glass



# SKYLINE

## SDX2 = laminated glass

- ◆ Interlayers are precision-cut in our factory
- ◆ Highest quality control standards
- ◆ Connections allow for easy on-site wiring
- ◆ Supports rear projection
- ◆ Can serve as writable surface



- 1 / Glass
- 2 / EVA Adhesive Layer
- 3 / SDX™ smart layer



**SKYLINE**

**TRANSFORMING GLASS™**



MCKENNA & COMPANY

# THANK YOU!

**Megan McKenna**

[megan@mckenna-co.com](mailto:megan@mckenna-co.com)

215.740.3403

**Kate Kenny**

[kate@mckenna-co.com](mailto:kate@mckenna-co.com)

610.636.2571

**Molly Mogg**

[molly@mckenna-co.com](mailto:molly@mckenna-co.com)

215.582.8723

---